

SPECIAL EDITION

The Business of Furniture | NeoCon 2018

BOF



Truly.[®] wanna meet you
OM | Neocon 7-5072

Truly.[®] by OM



smart seating

NEX

Reach new heights with NEX!

June 2018 launch.

June 11 - 13 | Visit our NEW showroom during NeoCon 2018 @ Chicago Merchandise Mart, 10th Floor - **Suite 1000**.



Groupe Lacasse Designer Tuesday | June 12

OPEN HOUSE FOR ALL DESIGN PROFESSIONALS!

Participate in our showroom tour with a Groupe Lacasse guide. Hear the story behind the design of our latest furniture introductions and bring back memorable inspirations!

Experience our **#VoilàGroupeLacasse GIF Animated Social Photo Booth!** The first 200 design professionals to take a guided showroom tour will receive our designer tote bag.

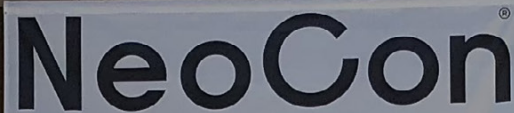
#VoilàGroupeLacasse

**GROUPE
LACASSE**

1 888 522-2773

www.grouperlacasse.com

NEX
Office Furniture Collection



NeoCon

BoF

The Business of Furniture
NeoCon 2018 Special Edition
June 9, 2018

HIGHLIGHTS

15 NeoCon is Middle Aged, but Far from Stodgy and Wrinkled
With NeoCon turning 50 this year, it would be easy to assume that it would share other middle age traits such as “finding you have no idea what ‘young people’ are talking about,” “falling asleep after one glass of wine” or “taking a keen interest in The Antiques Road Show.” And yet it feels fresh somehow, doesn’t it? NeoCon might make YOU feel a bit haggard and old come Wednesday, but the event itself is anything but stodgy.

24 Floor Plans
Find your way around NeoCon this year.

32 The Best and Brightest Products debuting during NeoCon
Hundreds of the latest products to stop by and see.

NeoCon
WELCOMES

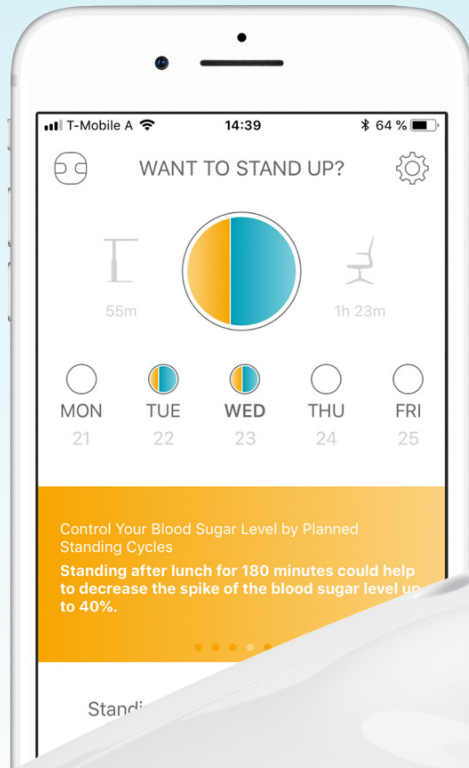
IIDA
THE COMMERCIAL
INTERIOR DESIGN
ASSOCIATION

WWW.IIDA.ORG

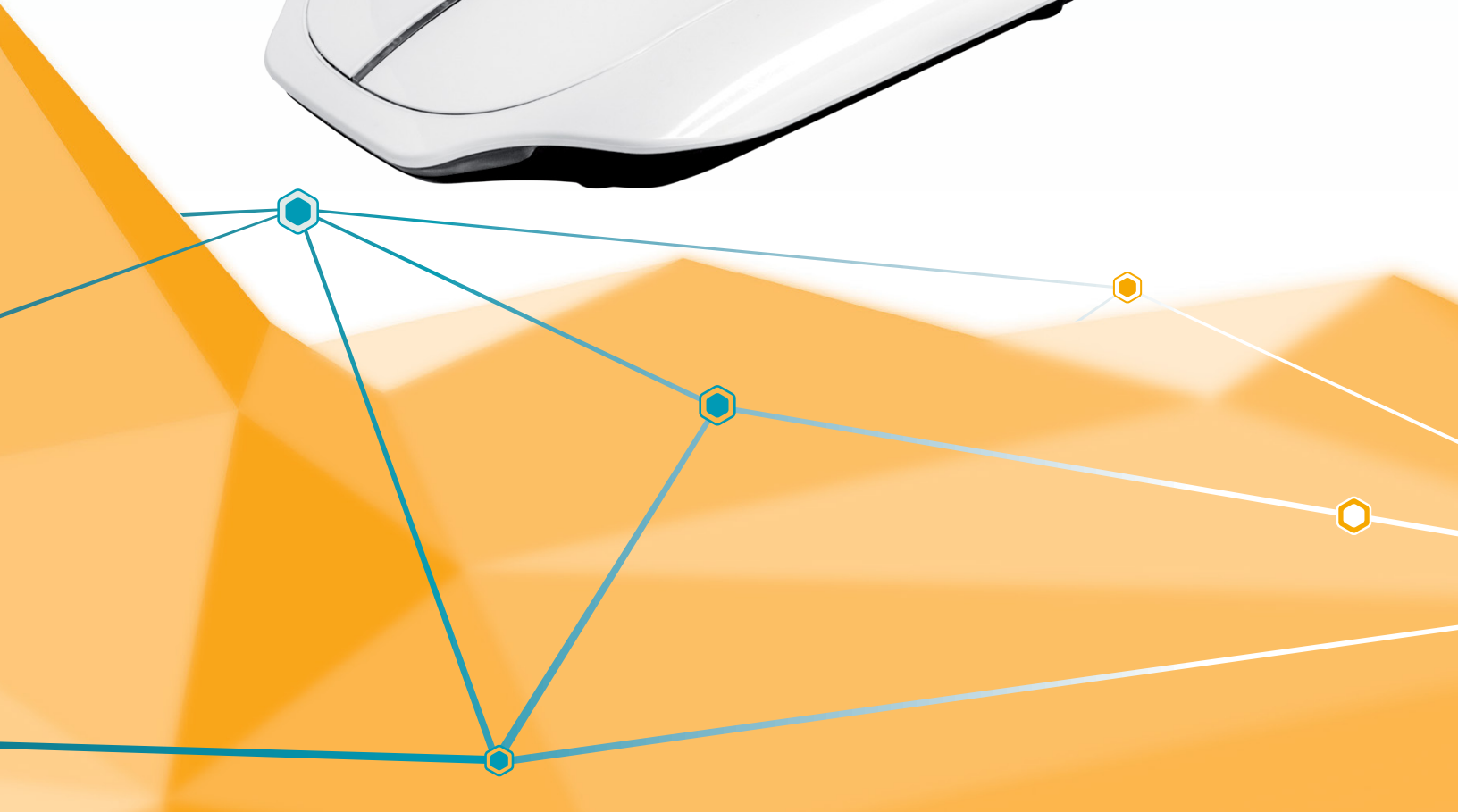
LEADING TO NEW HEIGHTS

LOGIClink gets personal
Communication and Connectivity.
All in one. All yours.

LOGICDATA provides connectivity and control through LOGIClink, allowing for communication and customization of the user's work environment. The new Motion@Work app complements this revolutionary product helping users optimize the ergonomic benefits intrinsic to them.



VISIT US AT NEOCON
June 11 | 12 | 13 2018
Booth 7-10078



Elegance redefined.

Ella, the next-generation monitor arm from Innovative, continues our commitment to making ergonomics beautiful. Offering effortless movement and sure-footed stability for monitors up to an astonishing 43-inch screen size, Ella's groundbreaking design is only surpassed by its unparalleled performance. See the future of monitor arms at NeoCon 2018.

NeoCon | Booth # 7-5094




innovative



RESHAPE TIME AND (WORK) SPACE

MAKE YOURSELF AT HOME...AT THE OFFICE.
THE MYAH COLLECTION
SHOWROOM 1147, JUNE 11-13 AT NEOCON.

 **SAFCO**[®] AND **MAYLINE**[®]

www.safcoproducts.com / www.mayline.com

What are you doing
at Neocon?

OM | Truly.[®]
Worth Meeting



Provide some Perspective, to your Prospective Seating.

om | **smart**seating | **booth 7-5072**

THE COMPANIES

2020	133	Configura	129	Knoll.....	88
9to5 Seating.....	34	Davis	54	Koleksiyon.....	90
AIS.....	35	Decca	55	LOGICDATA	132
Allseating	41	Encore.....	55	Momentum	120
Allsteel.....	43	Enwork	56	National Office Furniture.....	92
Arcadia	43	ESI	58	Nemschoff	93
Arconas	46	Falcon	114	Nienkamper.....	94
Arc-Com.....	118	Geiger	58	Nook	96
Arper.....	47	Global	59	Okamura	97
Artopex.....	134	Groupe Lacasse.....	60	OM	98
BiSemA Corporation	128	Gunlocke	63	Peter Pepper.....	100
Boss Design.....	49	HBF	66	Pallas Textiles.....	122
Brentano	118	Herman Miller	67	Safco - Mayline	101
Bretford.....	124	HPFI.....	70	Scandinavian	103
BuzziSpace	51	Humanscale.....	72, 130	SitOnIt	104
Camira.....	119	Indiana Furniture.....	75	Spec Furniture.....	104
Carnegie	119	Innovant.....	76	Steelcase	106, 132
Chief	125	Innovative	127	Studio TK.....	110
Claridge	52	Jabbrrbox	77	Symbiote	112
Clarus Glassboards.....	52	JANUS et Cie.....	78	Teknion	112
Coalesse	53	JSI	79	Thonet	114
Community.....	53	Keilhauer.....	80	Versteel	116
Concertex.....	120	KI	84		
		Kimball Office	86		



Pop-up Showroom



Monday 10:30am to 3pm
River Roast Restaurant, 315 N LaSalle St, Chicago 60654

artopex®



FREEDOM FROM LIMITATIONS

Connectrac Under-Carpet Wireway

The Connectrac® Under-Carpet Wireway delivers power and data with an elegant and flexible, floor-based cable management solution unlike complicated and expensive methods such as core drilling, trenching or power poles. Our ultra-low profile wireway integrates with any furniture and can be moved or reconfigured as environments evolve.

**Visit us at NeoCon,
booth 7-10050 and at
the Materials Pavilion.**

CONNECTRAC
Freedom From Core Drilling!

Since 2005

1.877.357.7539

PowerYourFurniture.com

SitOnIt • Seating®



neocon / showroom 1150

Made in
California.

Designed
by you.



sitonit.net
ideondesign.com



The Business of Furniture



Editor-in-Chief, Bellow Press Rob Kirkbride

Vice President, Sales & Marketing, Publisher, Bellow Press Melissa Skolnick

Vice President, Content Production, Bellow Press Todd Hardy

Workplace Guru, BoF Stephen Viscusi

Guest Columnist, BoF Jeremy Erard

Guest Columnist, BoF Al Everett

Contributing Writers, BoF:

Amanda Schneider, Emily Clingman, Bruce Buursma, John Q. Horn, Jeremy Myerson,
Stef Schwalb, Gary James, Scott Lesizza, Bryce Stuckenschneider, Michael Dunlap

Illustrator, BoF Jamie Cosley

Copy Editor, BoF Linda Odette

Publishing Headquarters

23403 E Mission Ave, Suite 107
Liberty Lake, Washington 99019
877-BELLOW9 (877-235-5699)
Email: info@bellow.press

Include us on your PR distribution list.

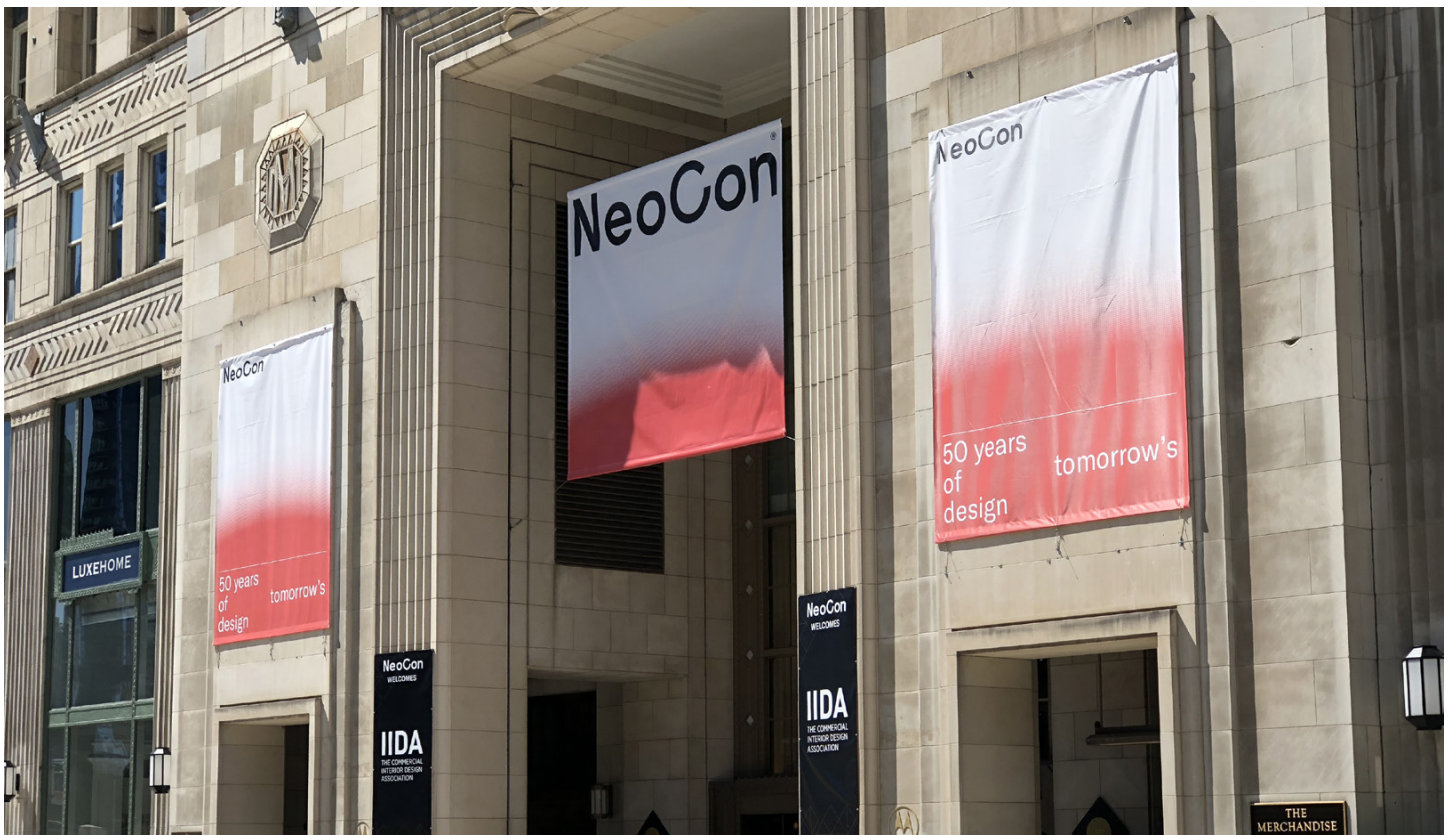
Send To: news@bellow.press

Please include high resolution photos along
with your release; at least 300 dpi.

https://bellow.press/SubmitNews

Business of Furniture and *Workplaces* magazine are the
go-to sources for keeping you informed about every-
thing that is happening in the industry. From trends that
affect your bottom line, to new products that will help
your customers work better, to stories that will help you
run a better, more informed company.

ROB KIRKBRIDE, EDITOR-IN-CHIEF



BOF **Upfront**

THE WEEK IN CONTRACT FURNISHINGS

NeoCon®

The platform for design

theMART
A VORNADO PROPERTY

NeoCon Ahead

NeoCon: The Product Issue

HUNDREDS OF MANUFACTURERS AND TENS OF THOUSANDS OF VISITORS WILL DESCEND UPON CHICAGO'S GIANT MERCHANDISE MART FOR NEOCON 2018. IN THIS SPECIAL NEOCON ISSUE OF *THE BUSINESS OF FURNITURE*, WE HIGHLIGHT MANY OF THE MUST SEE NEW PRODUCTS THAT WILL BE ON DISPLAY.

ITS. OUR PURPOSE.

0005 14

NeoCon is Middle Aged, but Far from Stodgy and Wrinkled

According to a survey of 2,000 adults commissioned by healthcare provider Benenden Health, one is middle aged if they enjoy afternoon naps, moan when they bend over, are frustrated by modern technology and choose comfort over style when it comes to clothing. Another sign of middle age? The preference of a night in rather than a night out.

With NeoCon turning 50 this year, it would be easy to assume that it would share other middle age traits such as “finding you have no idea what ‘young people’ are talking about,” “falling asleep after one glass of wine” or “taking a keen interest in *The Antiques Road Show*.” And yet it feels fresh somehow, doesn’t it?

NeoCon might make YOU feel a bit haggard and old come Wednesday, but the event itself is anything but stodgy. In fact, it might be as robust as it has ever been. So far this NeoCon (and it hasn’t even officially started), we’ve been treated to some seriously important news (West Elm went with Steelcase, HAY and Maars went with Herman Miller and Knoll, well, they are going to go it alone next year in Fulton Market).

Pundits talk about how work is changing. It really is. So is real estate and technology, two things that are bound to have a profound effect on the industry. That is precisely why NeoCon is so important — now as it was 50 years ago when it started. It is the barometer for the industry, our True North, the our celestial guidepost that helps us navigate our way through these monumental changes.

The changes in the way we work can be seen in the following pages, our product guide for the show. Products range from the pedestrian, but necessary, to those that push the envelope of the office to the extreme. And if there is anyone who questions the creativity, innovation and manufacturing expertise, point them to this publication. We catalog the best industry traits every week, but no more so than in this special issue of *Business of Furniture*.

This listing of new products is probably not complete. We may have missed a few new products. For that, we apologize in advance. But please know that it isn’t from a lack of effort. My colleagues Todd Hardy and Melissa Skolnick busted their buns trying to include as many of your products as humanly possible. It is a fantastic undertaking; one that takes hundreds and hundreds of hours to compile and organize. When you see them in the halls of the Mart, make sure to congratulate them for this body of work.

Still, they would be first to tell you that they are simply compiling the industry’s brilliance and reflecting it back to you. In this issue, you are the stars. We just bring the constellation together so it shines as brightly as it can.

So take a moment now to read through all you and your industry has accomplished. Make note of products you want to see in person. Use this as your guide to NeoCon and all it offers. And be grateful that you work in such a wonderful industry. NeoCon is truly a wonderful, rare event.

Of course, the products would be nothing without the people behind them. Thousands and thousands of work hours have been logged on these products by people who really care. I can’t wait to see all of you and shake your hands in person. That’s what makes NeoCon really special — friendships old and new that can be celebrated.

While NeoCon might be 50 this year, it is far from old and wrinkled. In fact, it is looking better than ever. Have a wonderful show and thank you for your continued support of Bellow Press and our publications, *Business of Furniture* and *Workplaces*. We could not do it without you.

Rob Kirkbride

Join our celebrations at
NeoCon this year!



**ESPRESSO,
CHAMPAGNE,
CAKE POPS,
AND FREE TOTES!**

MONDAY 06/11
The 90th Cocktail Party
2pm - 6pm

TUESDAY 06/12
Morning Mimosa
9am - 2pm

behind every

tattoo™

is a story

Our Tattoo™ celebrates individuality and expression. It's a collection of products as well as a design philosophy that invites you to rethink and rearrange your space. Allowing everyone a way to stand out *and* belong.

GET INK.

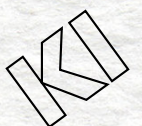
Channel your inner rebel – at least temporarily – with Tattly®. Select from designs curated by KI and custom designed by local artists.

TATTLY

FAKE TATTOOS BY REAL ARTISTS

Showroom #1181

| ki.com/neocon



GUNLOCKE PRODUCTIVITY



NEOCON GUNLOCKE SHOWROOM 222 Merchandise Mart Plaza
Floor 11, Space 1126
Chicago, IL

Gunlocke®
GUNLOCKE.COM

KEILHAUER

untucked

© 2018 Keilhauer LTD.



untucked™
The new soft contract collection from Keilhauer. Combining the concepts of individuality and collaboration that apply to today's casual workspace.

Designed by E00S / Made by Keilhauer

CHICAGO, ILLINOIS

NeoCon - Chicago
June 11-13, 2018



NeoCon celebrates its 50th edition as the world's leading platform and most important event of the year for the commercial design industry. Held every June at theMART in Chicago since 1969, NeoCon serves as the commercial design industry's launch pad for innovation.

www.neocon.com

LAS VEGAS, NV

Ergo Expo
August 21-24, 2018

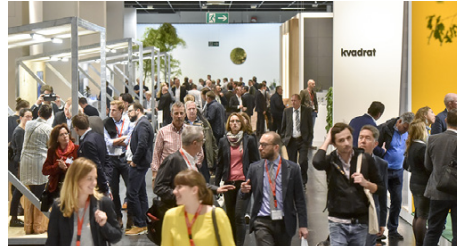


For more than two decades, professionals have relied on **ErgoExpo** to learn how to build an effective ergonomics program or maximize an existing one, on any budget, in any industry. ErgoExpo is also home to the industry's largest expo, featuring hundreds of exhibitors offering thousands of ergonomic and safety products — all under one roof!

www.ergoexpo.com/

COLOGNE, GERMANY

Orgatec 2018
October 23, 2018 - Oct 27, 2018



Discover visionary concepts at **ORGATEC**. The digital transformation means work is no longer tied to firmly defined spaces and times. Tomorrow's office can be anywhere ... even in our heads. The future belongs to flexible knowledge workers who work creatively and with a sense of responsibility — and it belongs to a work culture that is based more so than ever before on cooperation, motivation and trust.

www.orgatec.com

TAMPA, FLORIDA

EDSPACES
November 7 - 9, 2018



If you're planning education spaces for the future, this is the conference where you can get a years worth of CEU credits, training on new products, and network with the industry who's who. Great session content, tours, and hands-on learning has been developed to meet your needs by your architect colleagues of the AIA Committee on Architecture for Education.

www.ed-spaces.com

PHOENIX, ARIZONA

Healthcare Design Expo
November 10 -13, 2018



From keynotes and panel discussions to facility tours, networking opportunities, and an exhibit hall showcasing the latest products and innovations, **HCD** brings it all together at this must-attend event.

www.hcdexpo.com

TORONTO, CANADA

IIDEXCanada 2018
November 29 - 30, 2018



IIDEXCanada is a 2 day event being held at the Metro Toronto Convention Centre North Building in Toronto, Canada. This event showcases products from 15,000 interior designers, architects, landscape architects, lighting designers, industrial designers, facility managers, developers, and business executives.

www.iidexcanada.com

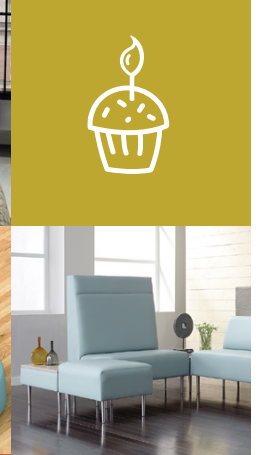
EVENT	DATE & LOCATION
NEOCON 2018 The premier, global platform for connecting, learning and conducting business in commercial interiors. http://www.neocon.com	Jun 11, 2018 - Jun 13, 2018 Chicago, Illinois
ERGOEXPO 2018 Maximize workplace ergonomic initiatives and safety & wellness programs at the largest ergonomics event in North America! http://www.ergoexpo.com/	Aug 21, 2018 - Aug 24, 2018 Paris Las Vegas Hotel
THE 42ND CHINA INTERNATIONAL FURNITURE FAIR (CIFF) Using the National Exhibition & Convention Centre (Shanghai•Hongqiao), the show covers 400,000 sqm. Over 2000 brands from the upstream and downstream industry will participate from various sectors including outdoor furniture, office furniture, commercial furniture, hotel furniture, furniture machinery and raw materials. http://www.ciff.furniture	Sep 11, 2018 - Sep 14, 2018 Shanghai, China
ORGATEC 2018 ORGATEC 2018 is an international exhibition for office facilities including architecture and design, acoustics, lighting, furniture and equipment. http://www.orgatec.com	Oct 23, 2018 - Oct 27, 2018 Cologne, Germany
EDSPACES The gathering place for architects, dealers, pre k-12, colleges and universities, independent manufacturers representatives, exhibitors, and corporations to learn about trends and experience the latest products and services to enhance student learning. http://www.EDspaces.com	Nov 7, 2018 - Nov 9, 2018 Tampa, Florida
HEALTHCARE DESIGN EXPO AND CONFERENCE Healthcare Design Expo & Conference boasts more than 100 educational sessions providing the latest research, trends, and strategies in the healthcare design industry. https://www.hcdexpo.com	Nov 10, 2018 - Nov 13, 2018 Phoenix, Arizona



HPFi



Celebrating
60
Years! 1958 - 2018



See us at NeoCon!
Market Suite
7-5062
www.hpfi.com
800.447.3462

CET DESIGNER
USER
AND DEVELOPER
CONFERENCE



Join us October 17-18 in Grand Rapids, MI

Early bird registration [\$550] begins June 11 and is available to the first 50 attendees.

Learn more at configura.com/userconference

Win a free registration at NeoCon

Stop by our NeoCon booth 7-5129 to enter to win a free registration to our conference [\$575 value].



Workplaces 2018 | June

Where I'm Working | The Flexible University Workplace | Space Matters Catching a Few Zs in the Office | How a Neighborhood in London Sets the Tone for the Way We Work | The Art of Business Relationships and How to Cultivate Good Chemistry | Remote.co Delivers Insight Into How To Optimize Remote Work | Product Matter | Aggression at Work can Lead to 'Vicious Circle' of Misconduct

Read the June 2018 issue today at: <https://bellow.press>

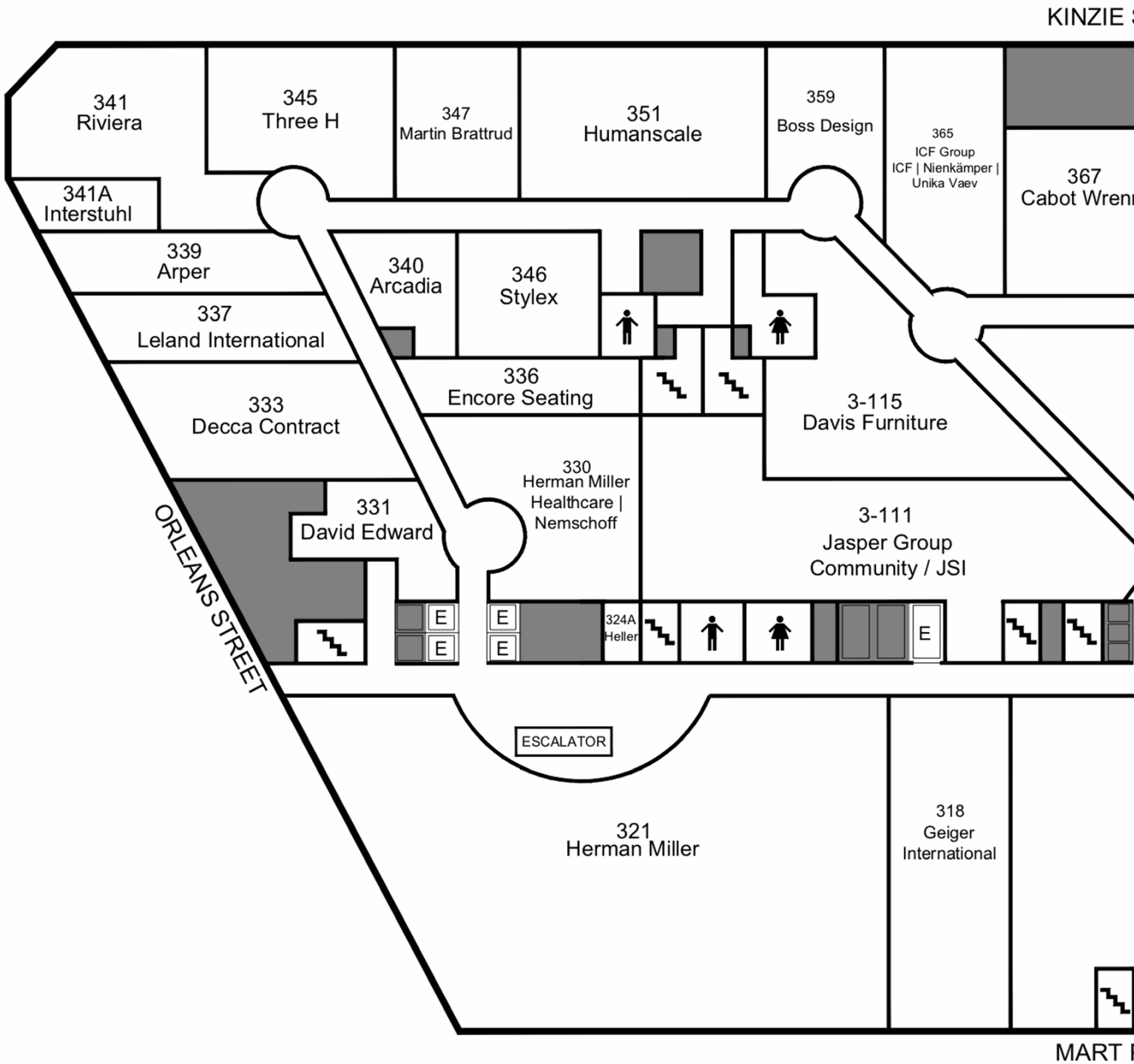


TAILOR BOOTH

Offered in Mid or High Back in two and three seat designs that can be configured back-to-back or wall adjacent, the opportunities to tailor your space are endless.

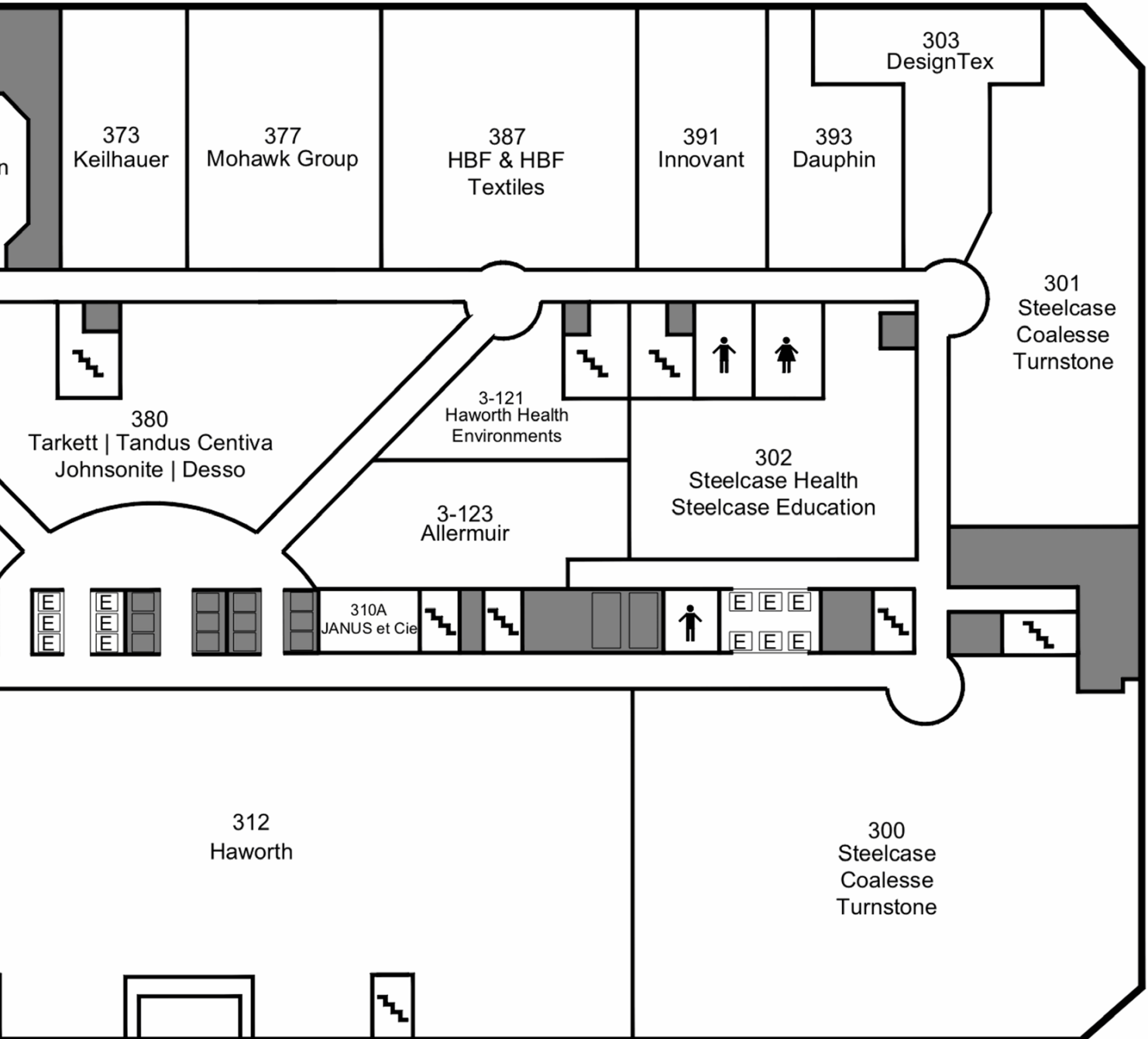
VISIT US AT NEOCON - SUITE 11-112

1.888.761.7732 | specfurniture.com



3rd Floor Exhibitors

STREET

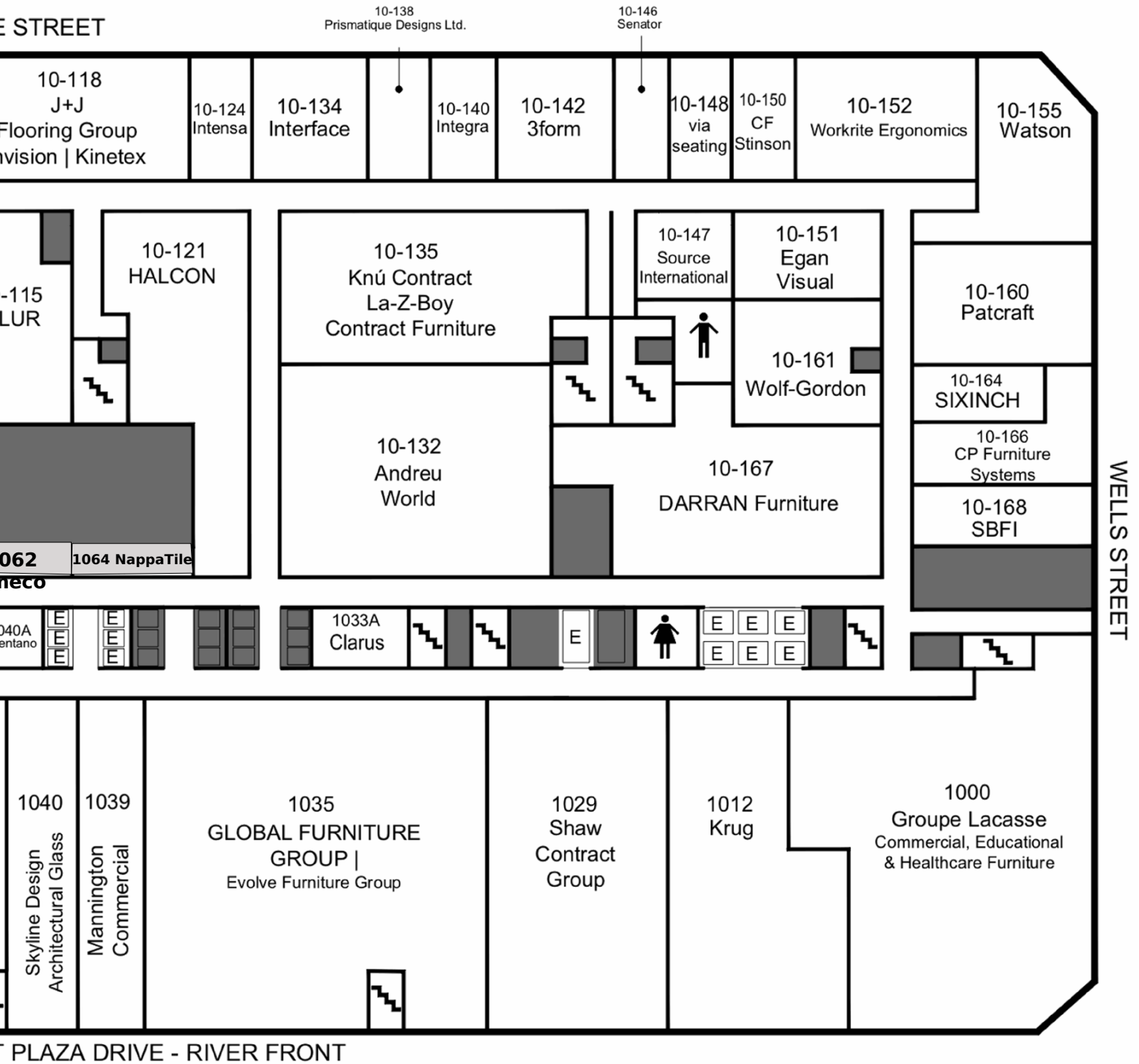


WELLS STREET

PLAZA DRIVE - RIVER FRONT

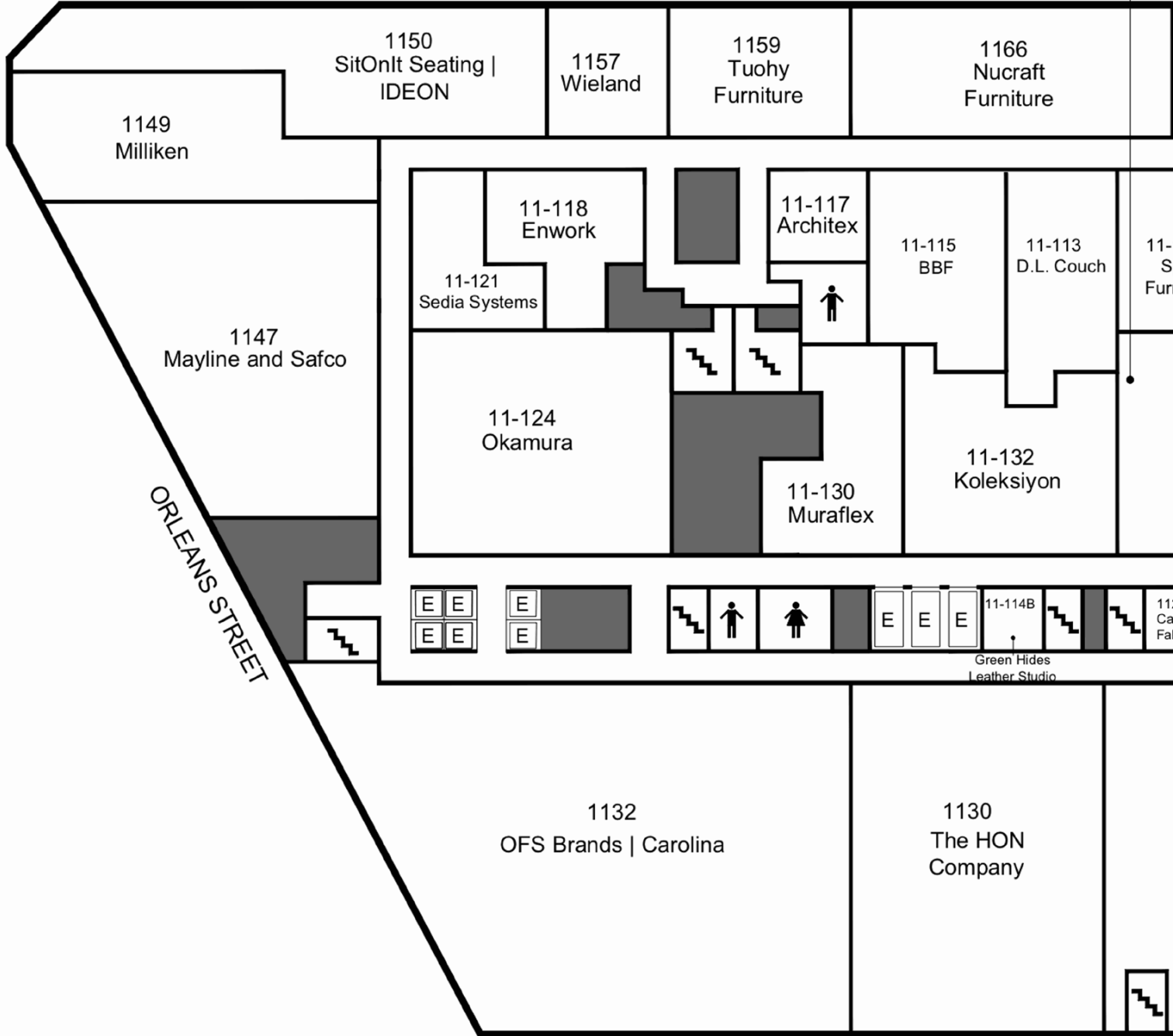


10th Floor Exhibitors



KINZIE

11-135
Barbican Architectural F
Contract Wall Solut
Summit Intl. Floori

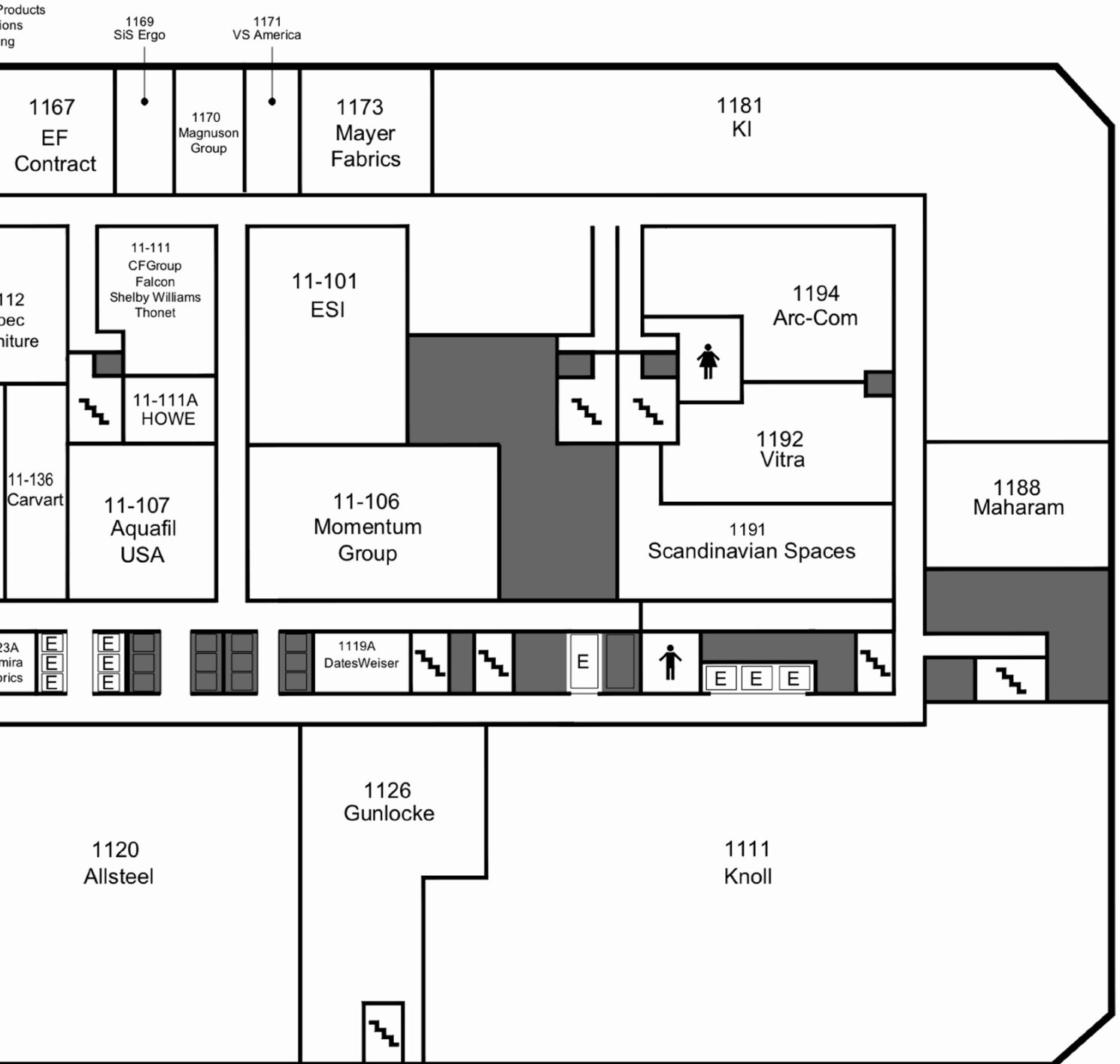


ORLEANS STREET

MART

11th Floor Exhibitors

STREET



ORLEANS STREET

Sales Office | Exhibitor Services

Seminar Room A

Seminar Room B

Seminar Room C

7-1001 Interiors+Source Materials Pavilion

7-1002 Interiors+Source Materials Pavilion

7-2001A Interiors+Source Materials Pavilion

7-3001 Quartz Master

7-3004 Smith & Fong Co. Plym

7-4005 Waldmann Lighting Compas

7-4008 Smart Film

7-5008 Energyspace Products

7-1005 BAST

7-1007 Tile

7-1008 Design, LLC

7-1010 Formica Corporation

7-1014 Sherwin-Williams

7-1018 Source Workspace LLC

7-1022 Wilsonart

7-1013 National Wallcovering

7-1017 InPro Smikter

7-1019 Hamilton

7-1023 Naav Inc.

7-1029 Food Services

7-1030 Construction Specialties Inc

7-1034 Bobrick Washroom Equipment

7-1035 Rigid

7-1037 BEST

7-1039 DuPont

7-1042 Bradley Corporation

7-1044 Smarter Surfaces

7-1046 Koroseal Interior Products

7-1047 Cambridge Sound

7-1051 NxtWall Architecture

7-1055 KWALU

7-1063 Symbiote, Inc.

7-1062 Great Openings / Sparkeology

7-2030 Abet, Inc.

7-3029 Stikwood

7-3030 E Ink

7-5029 C.R. Laurence Co., Inc.

7-5033 LogiSon Network

7-5037 Xtreme Interior Architectural Solutions

7-5041 APCO Sign Systems

7-5045 Marshall Furniture, Inc.

7-5030 Maars Living Walls

7-5042 FreeAxez, LLC

7-5046 Friant & Associates

7-7030 Chilewich

7-7036 FurnitureLab

7-7042 Sunbrella Contract

7-7046 LOFTwall

7-7050 Smith System

7-7054 LUX LED Lighting

7-8030 RT London

7-8034 ITOKI Corporation

7-8042 Formspace LP

7-8046 Metal Work

7-8050 Ares Line Spa

7-8054 Garrett Leather Corp.

7-9030 Doug Mockett & Co.

7-10034 Mikomax Smart Office

7-10038 OMT-Veyhl

7-10042 Eureka Ergonomic

7-10046 BIFMA

7-10050 Connectrac

7-10054 Frasch

7-10058 ICF Group

7-2054 SnapCab

7-3049 Seatply Products

7-3054 Borgo Contract Seating

7-4050 Stance Healthcare

7-5062 H

7-7062 Frame

7-8062 Takeform

7-9062 StudioCraft

7-9066 Kaioli Electric

7-1005 Wintex Ltd.

FURNITURE & FABRICS

INTERIOR BUILDING PRODUCTS

INTERIOR FINISHES

7th Floor Temporary Exhibitors

ZIE STREET

7-1068 Symmetry Office	7-1073 Regency, Inc.	7-1077 Rain Design Inc.	7-1079 Stabius Inc.	7-1083 Smith Industries, Inc.	7-1085 Nevers Industries, Inc.	7-1089 Lesro Industries	7-1095 Schwinn Ojma, Inc.	7-1097 Hardware, Inc.	7-1101 H Contract	7-1105 Euro-Amazon	7-1107 Euro-Amazon	7-1109 Ideal CxI	7-1111 Platinum Visual Systems	7-1113 Harvest Link International Pte. Ltd.	7-1117 Brado Contract	7-1125 Bretford	7-1129 Comfordy Serad Enterprises Inc.	7-1131 BeCo	7-1135 BeCo	7-1137 Charngzhou Tianan	7-1140 Eastern Global Corporation					
7-1068 Symmetry Office	7-1074 Spacesaver Corporation	7-1078 Digilock	7-1082 ECA/Dekko			7-1094 Boss Office Products Inc.	7-1102 Silence Business Solutions	7-1106 Ergotron, Inc.	7-1111 Electra Co., Ltd.	7-1114 Sileather	7-1118 IVARS USA		7-1130 SAOSEN FURNITURE	7-1134 Guangzhou Woshi	7-2133 Ningbo Aoke Office Equipment Co., Ltd.	7-2139A III	7-2140 TIMOTION Corporation	7-2139A III	7-2140 TIMOTION Corporation	7-2139A III	7-2140 TIMOTION Corporation					
7-2070 FitDesk LLC	7-2074 Hirsch Industries	7-2078 Series Seating	7-2082 AMQ Solutions, LLC			7-2094 PS Furniture	7-2098 Holland DACO	7-2100 DACO	7-2102 X Chair	7-2106 Kore Design, Inc.	7-2110 Flash Furniture	7-2114 Dorel Business	7-2118 Otilite Technologies, Inc.	7-2122 eisisINC	7-2130 Legrand, CHIEF	7-2134 Unbu BISEMA	7-2136 Unbu BISEMA	7-2139A III	7-2140 TIMOTION Corporation	7-2139A III	7-2140 TIMOTION Corporation					
7-3069 Virco, Inc.	7-3072 DACASSO	7-4071 Bespoke	7-4072 Varie	7-3078 Mined 3D	7-4077 Artifax	7-4078A Lily	7-4078B Lily	7-4078C Lily	7-4078D Lily	7-4078E Lily	7-4078F Lily	7-4078G Lily	7-4078H Lily	7-4078I Lily	7-4078J Lily	7-4078K Lily	7-4078L Lily	7-4078M Lily	7-4078N Lily	7-4078O Lily	7-4078P Lily					
7-3069 Virco, Inc.	7-3072 DACASSO	7-4071 Bespoke	7-4072 Varie	7-3078 Mined 3D	7-4077 Artifax	7-4078A Lily	7-4078B Lily	7-4078C Lily	7-4078D Lily	7-4078E Lily	7-4078F Lily	7-4078G Lily	7-4078H Lily	7-4078I Lily	7-4078J Lily	7-4078K Lily	7-4078L Lily	7-4078M Lily	7-4078N Lily	7-4078O Lily	7-4078P Lily					
7-5071 Zenbooth	7-5072 OM	7-5078 Nook Pod	7-5082 Aceray LLC			7-5094 Innovative	7-5106 BEAUFURN LLC	7-5110 Offices To Go	7-5122 2020	7-5101 National Lighting Corp.	7-5109 Kindel Rapids	7-5113	7-3118 Loctek Ergonomics	7-3124 Khamdeon Software	7-3130 ProjectMatrix	7-3134 Zhejiang Jiechang	7-3136 Meadows Technology Group	7-5129 Configura, Inc.	7-4134 Chameleon Power	7-5133 Lead Retrieval - QRLeadr	7-5136 Mamava					
7-5071 Zenbooth	7-5072 OM	7-5078 Nook Pod	7-5082 Aceray LLC			7-5094 Innovative	7-5106 BEAUFURN LLC	7-5110 Offices To Go	7-5122 2020	7-5101 National Lighting Corp.	7-5109 Kindel Rapids	7-5113	7-3118 Loctek Ergonomics	7-3124 Khamdeon Software	7-3130 ProjectMatrix	7-3134 Zhejiang Jiechang	7-3136 Meadows Technology Group	7-5129 Configura, Inc.	7-4134 Chameleon Power	7-5133 Lead Retrieval - QRLeadr	7-5136 Mamava					
7-7070 Comp Sit Inc.	7-7074 De Vorm	7-7080 Eurotech/Raynor			7-7094 Sigmatic	7-7100 Fluidconcepts & Design Inc. / Inline Systems	7-7106 Upofloor & Kahrs	7-7112 Shannon Specialty Floors/Teknoflor	7-7118 DuChateau / American Guild	7-7130 FloorFolio Industries	7-7140A Garrison Collection	7-7140B Garrison Collection	7-7140C Garrison Collection	7-7140D Garrison Collection	7-7140E Garrison Collection	7-7140F Garrison Collection	7-7140G Garrison Collection	7-7140H Garrison Collection	7-7140I Garrison Collection	7-7140J Garrison Collection	7-7140K Garrison Collection					
7-7070 Comp Sit Inc.	7-7074 De Vorm	7-7080 Eurotech/Raynor			7-7094 Sigmatic	7-7100 Fluidconcepts & Design Inc. / Inline Systems	7-7106 Upofloor & Kahrs	7-7112 Shannon Specialty Floors/Teknoflor	7-7118 DuChateau / American Guild	7-7130 FloorFolio Industries	7-7140A Garrison Collection	7-7140B Garrison Collection	7-7140C Garrison Collection	7-7140D Garrison Collection	7-7140E Garrison Collection	7-7140F Garrison Collection	7-7140G Garrison Collection	7-7140H Garrison Collection	7-7140I Garrison Collection	7-7140J Garrison Collection	7-7140K Garrison Collection					
7-8068 Arconas	7-8074 Linea Italia	7-8078 IOPC	7-8080 Eurotech/Raynor			7-8094 Gressco	7-8102 Pulse Design	7-8106 Roppe Corporation	7-8112 American Biltrite	7-8116 Karndeian Designflooring	7-8130 TAJ Flooring, Inc.	7-8134 ASM Modular Systems	7-9133 Floor World, S.L.	7-9130 CBC Flooring	7-9134 Treford Americas	7-10133 ANT Tile	7-10098 Raskin Industries	7-10102 Congoleum Corporation	7-10110 Six Degrees Flooring Surfaces	7-10114 Junckers Hardwood	7-10118 American Chic, Inc. / Jiangsu kailli Carpet Co., Ltd.	7-10122 Schluter Systems L.P.	7-10126 FLEXCO	7-10130 TECSOM USA	7-10134	7-10138 Food Service
7-8068 Arconas	7-8074 Linea Italia	7-8078 IOPC	7-8080 Eurotech/Raynor			7-8094 Gressco	7-8102 Pulse Design	7-8106 Roppe Corporation	7-8112 American Biltrite	7-8116 Karndeian Designflooring	7-8130 TAJ Flooring, Inc.	7-8134 ASM Modular Systems	7-9133 Floor World, S.L.	7-9130 CBC Flooring	7-9134 Treford Americas	7-10133 ANT Tile	7-10098 Raskin Industries	7-10102 Congoleum Corporation	7-10110 Six Degrees Flooring Surfaces	7-10114 Junckers Hardwood	7-10118 American Chic, Inc. / Jiangsu kailli Carpet Co., Ltd.	7-10122 Schluter Systems L.P.	7-10126 FLEXCO	7-10130 TECSOM USA	7-10134	7-10138 Food Service
7-9070 EVOline	7-9074 Konnect Desk Organization & Lighting	7-9078 SAMHONGSA			7-9086 Konzept Inc.	7-9094 Century Tile Distributors	7-9098 Wickham Hardwood	7-9102 StonePeak Ceramics	7-9106 Lonseal Flooring	7-9112 Armstrong Flooring	7-10115 Aspecta by Metroflor	7-10130 CBC Flooring	7-9134 Treford Americas	7-10133 ANT Tile	7-10098 Raskin Industries	7-10102 Congoleum Corporation	7-10110 Six Degrees Flooring Surfaces	7-10114 Junckers Hardwood	7-10118 American Chic, Inc. / Jiangsu kailli Carpet Co., Ltd.	7-10122 Schluter Systems L.P.	7-10126 FLEXCO	7-10130 TECSOM USA	7-10134	7-10138 Food Service		
7-9070 EVOline	7-9074 Konnect Desk Organization & Lighting	7-9078 SAMHONGSA			7-9086 Konzept Inc.	7-9094 Century Tile Distributors	7-9098 Wickham Hardwood	7-9102 StonePeak Ceramics	7-9106 Lonseal Flooring	7-9112 Armstrong Flooring	7-10115 Aspecta by Metroflor	7-10130 CBC Flooring	7-9134 Treford Americas	7-10133 ANT Tile	7-10098 Raskin Industries	7-10102 Congoleum Corporation	7-10110 Six Degrees Flooring Surfaces	7-10114 Junckers Hardwood	7-10118 American Chic, Inc. / Jiangsu kailli Carpet Co., Ltd.	7-10122 Schluter Systems L.P.	7-10126 FLEXCO	7-10130 TECSOM USA	7-10134	7-10138 Food Service		
7-10078 LOGICDATA North America, Inc.	7-10086 Crossville, Inc.			7-10098 Raskin Industries	7-10102 Congoleum Corporation	7-10110 Six Degrees Flooring Surfaces	7-10114 Junckers Hardwood	7-10118 American Chic, Inc. / Jiangsu kailli Carpet Co., Ltd.	7-10122 Schluter Systems L.P.	7-10126 FLEXCO	7-10130 TECSOM USA	7-10134	7-10138 Food Service													

WELLS STREET

ART PLAZA DRIVE - RIVER FRONT

TECHNOLOGY

FLOORING



NeoCon 2018 Product Edition

The editors of *The Business of Furniture* have looked high and low to bring you what we believe are the biggest introductions being presented this year at NeoCon.



on

NeoCon
50 years of design tomorrow's

NeoCon
WELCOMES
IIDA
THE COMMERCIAL
INTERIOR DESIGN
ASSOCIATION
WWW.IIDA.ORG



THE
MERCHANDISE
MART



*9to5 Seating [10-109]***Luna, Neo, Lilly and Mimi.**

➔ 9to5 Seating launches four new chair series to add to their task and lounge collections: Luna, Neo, Lilly and Mimi.

The Luna and Neo are two additions to the task/work seating, focusing on function, ergonomics and long-lasting comfort. The Lilly is the second lounge seating collection being introduced by 9to5 Seating. The Lilly focuses on sophisticated design and comfort for collaborative and public spaces. Mimi is the newest addition to the stacking collection. The Mimi combines design, comfort and versatility with more support than your typical multi-purpose chair.

“We listened to our customers and the marketplace and decided to expand our task, lounge and stacking collections. Based on our testing, the positive response to these new series shows listening to our customers always works,” said Dara Mir, President of 9to5 Seating. “The quality, comfort, ergonomics and classic designs make the Luna, Neo and Lilly great additions to our catalog, but it’s the starting prices that makes them stand out from the competition.”

*Lilly**Luna**Mimi**Neo*

AIS [1086]

Calibrate Community



➔ Making its debut at NeoCon as part of the Calibrate Series is a new open-plan desk system by AIS. Calibrate Community is a thoughtful solution reflecting simplicity and flexibility as it accommodates the personal needs of individuals and the collaborative needs of teams.

Offering a variety of planning applications and off-modular capabilities, Calibrate Community provides ample storage options, plus power and data that's easily accessible, discretely managed and intentionally incorporated as part of the system.

“Inherently designed as an alternative to panel systems, Calibrate Community provides the right balance of individual space and team areas. Providing functional reconfiguration adjustments throughout the workday and technology support, users can appreciate more choices and easily remain focused on the task at hand,” Stewich said.

Unveiling at Neocon 2018, Calibrate Community will be available later this fall.

AIS [1086]

Calibrate Conferencing

➔ As an extension of AIS's popular laminate desking and storage solutions, Calibrate Conferencing tables and solutions offer a holistic design aesthetic – integrating conferencing spaces into any work environment at an affordable price.



“Calibrate Conferencing is created for today’s teams with meeting room designs that are simple, relevant and ready to help people engage with one another,” Executive Vice President of Product Development Bill Stewich said.

From the conference room to the private office to the open floorplan, seamless levels of integration are easily achieved within and across the workplace with the popular Calibrate laminate solutions of AIS.

Because the new tables and conferencing products coordinate with the existing Calibrate Series, it’s easy to specify, order and afford a look that’s sophisticated and coordinated. The collection also includes buffets, bookcases and receptacle bins. Continuity is created through shared materiality, dimensions, hardware and other design elements, while technology is supported with ample options for power/data access.

Calibrate Conferencing’s functional and design choices include a variety of sizes, shapes, edge details, bases and power/data options. Conference tabletops can be specified as rectangular, “boat”-shaped or tapered. The tapered shape supports views for all table participants. Table-base options range from two to four in quantity, offering greater size capabilities and choices. Four

hardware pull styles and 18 Grade A laminate top choices provide unlimited custom looks. Power and data options optimize convenience for individuals and teams. Kitted (pre-specified) tables also are available – one product code delivers the base, top and required power/data.

Unveiling at NeoCon 2018, Calibrate Conferencing will be available starting in July.

Day-to-Day



➔ AIS unveils the brand-new Day-to-Day Tables collection at NeoCon 2018. The expansive product line delivers conferencing, meeting, training, nesting, occasional, and height-adjustable tables for all kinds of work and learning environments.

“Day-to-Day Tables are practical and approachable, bringing comfort and choice to support the dynamic needs of workers and students throughout the day,” Executive Vice President of Product Development Bill Stewich said.

The tables can be specified for a range of environments, from casual meeting rooms to private offices to open floor plans. Day-to-Day’s clean design and plentiful options allow easy configuration and specification. Many top shapes, more than 10 base options, 18 Grade A laminate selections and a variety of edge details make it easy to create a unified design for any space.

The product line pairs with AIS systems and casegoods to create seamless integration in interior environments.

Made at AIS’s manufacturing facility in Massachusetts, Day-to-Day Tables will be available starting in August 2018. The tables will ship within two to three weeks of ordering.

AIS [1086]

Devens Task Chair

➔ AIS exhibits its new Devens task chair at NeoCon 2018.

The chair embodies intuitive design, robust ergonomics, quality and value for a wide range of needs throughout the workplace – from reception areas to open spaces to private offices.



Combining the latest in comfort and intuitive functionality, Devens has a weight-activated synchro-tilt mechanism, which in combination with its well-thought-out ergonomic design provides optimal seated support.

“Once properly adjusted, the Devens chair offers a task seating experience so comfortable and natural that users don’t think about the chair and how it works – the chair simply and intuitively works for them,” AIS Vice President of Seating Kees Breeuwsma said.

The chair comes standard with rich ergonomic features that make it easy to adjust to fit each user, regardless of task or preference. These features include the weight-activated synchro-tilt mechanism (automatic tension) with multi-position back-lock, armless or 4D arms, pneumatic

seat-height adjustment, 2-inch seat-depth adjustment and adjustable lumbar support. The chair has been designed to comfortably accommodate 95 percent of the diverse worker population.

In addition to superior fit and functionality, Devens offers universal style with a number of fabric and finish options. With three mesh colors, two frame finishes, three base finishes and a variety of seat upholstery options, the Devens task chair can be easily configured to reflect personal style preferences. The chair is BIFMA-level certified.

Named after Fort Devens in Massachusetts, and produced at AIS’s Massachusetts-based manufacturing facility and headquarters, express models of the Devens task chair can ship just three days from initial order.

“Perfectly balancing price and performance, Devens delivers in comfort, quality, value and style,” AIS President and CEO Bruce Platzman said.

LB Lounge Seating

➤ AIS exhibits its new LB Lounge seating at NeoCon 2018.



The LB Lounge creates naturally sociable seating for a variety of settings, including corporate, healthcare and educational environments. Available in two- and three-seat configurations with multiple widths and back heights, the LB Lounge offers generous dimensions and clutter-controlling open storage.

The storage base is available in a multitude of Grade A laminate choices. Fabric options for the seat and back cushions include many graded-in materials, and the LB Lounge readily accepts many COMs (customers' own materials).

LB Lounge is scaled to integrate with Calibrate, Matrix, Divi and other AIS product lines.

"The seat's bold, solid profile helps to define spaces, and blended finishes can be specified for a custom look," said Bill Stewich, AIS executive vice president of product development.

Produced at AIS's Massachusetts-based manufacturing facility and headquarters, LB Lounge seating can ship within three weeks after the order is entered.

AIS [1086]

Rutland

➔ Launching in June, Rutland low stools are ideal for quick conferencing in classrooms, offices and patient exam rooms. Taller stool options fit perfectly into today's sit-stand work environments and for short-term counter-height seating. Rutland seating's compact, lightweight design and handle allow easy movement and storage.

Height-adjustable stools and perches promote the comfort and health benefits of changing postures throughout the day. Use low stools for quick conferencing in classrooms, offices or patient exam rooms. Taller options fit perfectly into today's sit-stand environments and for short-term counter-height seating.



Sulli

➔ Launching in June, Sulli perch seating is a fun, flexible “pop of inspiration” for a variety of spaces, especially educational settings and casual work environments. A colorful, friendly façade masks Sulli's “inner intelligence” – the ability to seamlessly height adjust simply by pulling on a side strap.



Volker Cubes and Nesting Tables

➔ Volker is the new town square – a lighthearted, simple, smart design that fits readily into any work or learning space to draw people together. Launching first as part of this new product line by AIS are the Volker cubes and nesting tables.

Volker cubes are visually and functionally at ease in a variety of applications; they're equally suited for impromptu gatherings in the office, as guest seating in workstations, in schools and other learning environments, and in casual waiting areas. The 18-inch fully upholstered cubes on casters roll where users need them to go.

The accompanying square-shaped stationary table doubles as a work surface for collaboration and as an “anchor spot” to discreetly stow the cubes when not in use.

Volker is named for one of its product designers, Volker Braun, who is AIS's plant manager for casegoods.

Produced at AIS's Massachusetts-based manufacturing facility and headquarters, the Volker cubes and nesting tables can ship three weeks from initial order.



Allseating [325 N. Wells St]

Astute

➤ Allseating and the design firm, busk+hertzog have created a chair ideal for all settings: Astute.



The back and seat capabilities can be customized with frame and upholstery styles available in three versions: reinforced polypropylene, partially upholstered and fully upholstered. Base designs include sled and four-leg and can be altered to work with three sizes — one guest and two stool heights.

The chair provides a solution for design quandaries across the board with more than 54 custom variations and 14 colors. Arm styles include Penguin, Loop or Armless in a polished aluminum finish, smoke and black matte finishes. “By carefully designing every single part from scratch, considering both aesthetics, durability and material consumption, we’ve tried to create a series of chairs that not only are functional and pleasing to the eye, but also are extremely customizable so they can be used in almost any unthinkable interior design concept,” the companies state in a press release.

Exchange

➤ Designed by Nick Gillissie in collaboration with Allseating, Exchange is a modular soft seating system that responds to the demand for furniture that supports both active work and relaxation in today’s constantly evolving corporate, education, and healthcare environments. The newest version of the highly acclaimed Exchange Collection is an achievement in both aesthetics and engineering.

The first of its kind on the market, the system is comprised of just seven injection-molded plastic components and a series of support rails, which allow the user to create 2,725 possible configurations to fit various space requirements or preferences. From single chairs, to banquettes, to open-plan collaborative enclosures, companies can adjust the system to suit the ever-changing needs of their employees. Exchange’s understated modern aesthetic, as well as its versatile sizing, allows for visual and functional continuity between soft seating applications across the board, from reception to cafeteria.

Exchange is strategically designed to account for future additions to the system. In conceptualizing the injection-molded plastic core, Gillissie thought to include spaces not yet necessary, but that will serve a valuable purpose in future workplaces as styles continue to evolve.



Allseating [325 N. Wells St]

Foster Patient Recliner

➔ Designed in collaboration with renowned Toronto-based designer Aaron Duke, the recliner was designed with optimal materials and specialized capabilities keeping the needs of the patient, family and caregivers in mind. Since its preview at NeoCon last year, the chair has evolved with improved ergonomics and arm functioning, as well as increased ease of assembly.

With built in lumbar support, molded foam, and a natural curved arm, the recliner is intended to be inviting to patients assisting them to begin the healing process.

In addition to maximizing a patient's comfort, the Foster Recliner also provides flexibility and safety to caregivers and family. Dual pivoting arms lift up for side access, providing a safer solution for transfer. The ergonomics of the back-release lever lock out when the arm is in a horizontal position, which aids with egress and ingress. Central brake and steer contributes to easy mobility, and infinite back recline allows the recliner to lay flat, providing a stable and comfortable sleeping solution for family members.



Allseating [325 N. Wells St]

Zinc

➔ Allseating will introduce the Zinc Collection, its second collaboration with iconic industrial designer, Carl Gustav Magnusson. Characterized by a visually inviting shell, elegant and unique legs, and carefully considered details, Zinc is a timeless seating solution for institutional, commercial, and indoor/outdoor settings.



When conceiving Zinc for Allseating, Magnusson strived to develop a visually simple chair that would not only look proper as a standalone, but also grouped in larger settings. Zinc's classic elegance is a direct result of Magnusson's design philosophy - to "avoid style, as that inevitably falls out of style." Immune to the passing trends, Zinc is a thoughtfully designed chair that is classic in

nature, considerate and ergonomic.

“Style is the antithesis of design; it comes in and goes out. Our intention remains to create elegant and ergonomically correct seating solutions that are classic, yet simple in appearance,” says Carl Gustav Magnusson, Founder of Carl Gustav Magnusson Design. “We created a product that exemplifies ‘timeless’ while simultaneously providing comfort, whether you are seated for five minutes or five hours.”

Zinc was designed with the intent of providing comfort to both short-term and long-term users. Available in 14 different colors, its single shell incorporates a sinuous curve, which reinforces the natural seating position, and an optional looped arm available for additional support. The shell is complemented by multiple base offerings, including a standard four-legged base; a sled base; and a wooden quad pod. Further, Zinc can be customized with an upholstered seat pad or upholstered seat and back pad design. The chair’s unique zinc cufflink detail was created with the shape of a gentleman’s cufflink in mind, adding a distinctive element to distinguish the design from its counterparts. The basic mechanics of the chair were designed with the intent of replication and refurbishment, allowing the user to easily replace pieces as they see fit as the chair’s components are constructed to be easily disassembled and recycled from the ground up.

“Carl’s technical skills, paired with an unparalleled spirit for design, continues to inspire us,” says Gary Neil, CEO of Allseating. “Zinc is exemplary of Carl’s dedication to creating products that are designed for long-term use—both in durability and aesthetics.”

Allsteel [1120]

Altitude

➔ Altitude A8 is a new solution from Allsteel that takes the main functions of the traditional panel spine with height adjustable tables and integrates them into the height adjustable table unit providing designers the ability to create spaces that accommodate end-users who need to rapidly form and change teams. This innovative system created in partnership with Scott Wilson of MNML, gives users the ability to move an entire station to a new location quickly without tools making it easier and more cost effective for facility managers and end-users.



Arcadia [340]

Co-op Single



➔ As the open floor plan concept has evolved to more effectively address occupants’ privacy concerns, the need for furnishings that support focused activity is becoming increasingly important. Arcadia’s Co-op Single was designed specifically for this purpose and serves as a counterbalance to busy collaborative meeting areas, crowded shared spaces and bustling open environments.

Designed by QDesign, which is based in Oak Brook, Illinois, the adaptable pieces are available in a variety of styles for creating work environments that support the individual. Co-op Single lets users decide how and where they want to work.

*Arcadia [340]***Starkie Stools**

➔ In today's collaborative environment, flexibility is the name of the game — and that rule especially applies to seating configurations. Offering a variety of seating heights is more important than ever, and Arcadia's stylish, new Starkie stool is raising the bar for this new norm in design.

“Providing a range of seating options across a wide range of sectors — from corporate to education, hospitality and the like — is essential to open space design because it encourages movement and creates more casual spaces for gathering or working alone,” says Helen Kim, director of marketing for Arcadia. The Starkie collection has a timeless simplicity that can intermingle across a variety of interiors.

Industrial designer Christopher Panichella created the stool, and his attention to detail is evident in the linear design with its gently rounded edges and softened curves intersecting along the ash wood frame. Starkie comes with or without a back, in seven standard finishes and in three heights — 18 inches, 25 inches and 30 inches. The stool features suspension support at the seat for comfort, whether perching for a brief conversation or seated for extended periods. It also can be specified with optional glides to protect hard-surface floors.

A chrome-finished foot ring lends an industrial, mixed-material aesthetic while providing durability in high traffic spaces. Designers also can choose from a variety of fabric and finish combinations to create a one-of-a-kind style.

**Uptown Social**

➔ Take up residence in Uptown Social, a full family of lounge and modular seating, benches and tables that mingle clean minimalist lines with the luxe comforts of home. Lounge, love seat and sofa models are offered in two arm widths, as well as armless, for addressing spatial limitations or achieving the perfect look. And, corresponding chaise models add a roomy bonus to the mix for truly stretching out in style.



WorkSmith

➤ A collection of products designed to support the makerspace movement and its influence across businesses, schools and healthcare facilities. Pieces work together or independently to create a place where people with shared interests can gather to work on projects while sharing ideas, equipment and knowledge.



By providing an outlet to think through problems using a hands-on approach, WorkSmith inspires the creation of tangible solutions and objectives. In many ways, it is an adverse reaction to the hyper-digital world we live in and brings us back to a simpler time where materiality, tactility and building things was what launched new innovations.

All products within the series are comprised of objects that are in absolute service to the task. Seated and standing height tables can serve different functions or provide alternate options for user preferences. Stools are presented in two heights, both of which can be adjusted to reach optimum seated levels. The cart model has useful storage spaces for housing a variety of materials while maintaining a large work surface area, and the best part is its mobility allowing it be moved and positioned from one area to the next. Cabinets are available with or without doors and can double-stack for larger storage capacity. Serving an array of needs, mobile easels round out the collection and provide the ideal backdrop for brainstorming and presenting visual concepts, dividing spaces and more.

With pieces designed for casualness, and primary visual elements existing to communicate function, there is a greater level of comfort interacting and utilizing them as intended. Fit for purpose and built to last, WorkSmith is meant to be used and abused, with accidental dings and scratches only adding to its character, and becoming part of the creative process story.

Arconas [7-8068]

inPower Hub and Morelli Bench

➔ Arconas is launching two new public furniture solutions, the inPower hub and Morelli bench at Neocon 50. The inPower hub is a sleek wall-mounted counter system designed with an integrated inPower flex 3 module for people to charge their personal electronics. The Morelli bench is a new addition to Arconas' increasing line of outdoor public furniture.

• inPower hub



The inPower hub takes advantage of unused wall space to create a calming respite area, with ample room for short-term multi-taskers to pause, work, eat, take a phone call, and recharge. The counter system, along with an optional noise dampening panel, offers an area for visual and acoustic privacy.

“The inPower hub was created to bring additional counter space and power solutions to under-utilized walls and corridors,” says Pablo Reich, Arconas' Executive Vice President. “It creates a quiet oasis where passengers can relax, charge, work, or take a phone call at ease.”

The inPower hub was designed by Fig40, a leading Canadian industrial design studio, and can be mounted at 3 different heights: wheelchair, standing, and seated. Mounted below the counter is an inPower flex 3 module that includes two AC receptacles and two USB-C ports. Multiple inPower hubs can be mounted side by side and the power modules can be connected through a single power outlet to maximize power options for passengers without incurring additional coring costs. The hub is also simple to install and has minimal contact with the floor for clear sight lines and easy maintenance.

• Morelli Bench

Recognizing the need for urban furniture that is elegant, functional, and durable, the Morelli bench was designed to provide a comfortable waiting experience and raise the value of outdoor public spaces. The timeless design visually enhances the space it lives in, while the flexible material and width options respond to the unique needs of each public space; even indoors.



This sophisticated bench features solid aluminum cast legs and supports either perforated steel planks or ipe wood slats in 66" and 84" width configurations.

The bench's floor mounting legs offer secure and easy installation.

“Given the nature of this bench, the materials used permits great flexibility for integrating the design into different spaces while complementing the other furniture around it,” states President of Morelli Designers, Michel Morelli, adding, “we wanted the bench to be something light, visually, that will stand the test of time”.

Arper [339]

Meety

➤ Designed by Lievore Altherr Molina, Meety borrows its visual language from the architecture of the bridge: strong but lightweight, supportive but with room for air.



Meety's distinctive aluminum legs provide a sturdy foundation to suspend multiple tabletop options that can be customized to suit diverse contexts. For large group gatherings or the intimacy of home life, Meety's system has an option to suit any need.

Meety's dynamic system expands further with new finishes and customizations, such as thick, smoked-glass, table-top options in round or boat-shaped shapes. New satin matte surfaces in Forbo linoleum are available in Pebble grey, Powder pink and black. A new range of colors for the Fenix laminate top include black, white, Beige Luxor, Efeso Grey

or Castoro Ottawa and base options in black, white or anthracite grey. For the workspace, cable grommets and trays, built-in vertical cable organization and a modesty panel are available.

Nuur

➤ Designed by Simon Pengelly, Arper's new Nuur is the essential form of a table: a single plane balanced on four legs. Its universality makes it very adaptable, integrating into any environment, from contract to residential to the workplace and the intimate space of the home.

Originally designed in square or rectangular tabletops of colored laminate or wood veneer, Nuur has added four new Fenix colorways: black, white, Bromo Grey and Colorado Pink.



Arper [339]

Kiik

➔ Kiik is a new modular collection created for the spaces between entry and departure, waiting and doing. Designed by Tokyo-based Iwasaki Design Studio, Kiik comprises a range of elegantly geometric forms that come together in endless compositions.



Kiik is defined by versatility; components are offered in a wide variety shapes, sizes, and finishes to create unique expressions and compositions, as well as to suit myriad spaces where people pause, work, and meet. The fundamental structures utilize seats with or without backrests, and tables in triangular, circular, square or rectangular shapes, all of which can be completed with ottomans and low or raised consoles. Upholstery options in a variety of textures and colors create a unique expression appropriate to the space.

“We developed the Kiik system so that each module can stand alone, or be linked together to create a configuration,” says Ichiro Iwasaki, founder, Iwasaki Design Studio. “This way of designing means that there are no limits to the kinds of configurations that can be created, making it even more adaptable to different contexts. It is therefore scalability, even more than modularity, that defines Kiik.”

During NeoCon, showroom visitors will be able to experience Kiik in virtual reality. To showcase the collection’s versatility and design potential, Arper commissioned Barcelona-based Studio Maio and Jeannette Altherr of Lievore Altherr to design a series of four virtual environments – Flow, Cupula, Frame, and Tower - each featuring a unique architectural vision and iteration of the collection. The environments explore the possibilities of a virtual architecture and its ability to convey particular emotional qualities, while offering four distinct ways to experience Kiik.

Boss Design [359]**Agent**

➤ For designers looking to incorporate the natural beauty of wood into their design schemes, the new Agent collection from the British brand Boss Design offers an answer.



Comprising a dining and lounge chair — with and without arms — together with bench, dining and side tables and contemporary high table with bar stools, Agent works in lounges, bars, breakout and meetings areas and visitor seating.

Every piece echoes simple, bold lines, timber framework and quality upholstery. Available in American black walnut or European oak frames and in a variety of fabrics, the collection is designed to complement a variety of interior design styles.

Agent dining and lounge chairs have a streamlined appearance but still a look of luxury and a comfortable feel. Featuring a slight back recline, both chairs are durable and a good fit for high traffic areas.

The dining table height complements all spaces and can be teamed with Agent chairs or benches. The high table features a white MFC top with a long-lasting finish. Agent bar stools' seats have a generous scoop that provides extra comfort.

“Flexibility is the new buzzword, and it’s all about facilitating social engagement without sacrificing comfort, whether that’s in restaurants, foyers or the workplace,” says Jeff Thompson, president at Boss Design North America.

Agent is manufactured at Boss Design’s facility in North Carolina

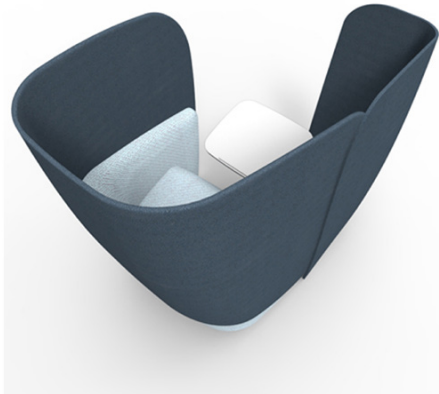
ATOM and Mango

➤ Boss Design enjoyed great success at last year’s NeoCon following the opening of its new and expanded showroom in The Mart, and the British commercial furniture manufacturer wants to raise the bar even higher at this year’s event with a lineup of new furniture.



Taking center stage in the showroom will be the company’s new furniture collection ATOM, created by award-winning British furniture designer Simon Pengelly. ATOM represents one of the most versatile furniture collections on the market with its family of products capable of furnishing an entire workplace.

Consisting of modularized seating, tables, desks and screens, ATOM can create workplaces that enable everyone to work in their own way. The 14 individual pieces of seating, including seven high- and seven low-back options, allow designers



to create an infinite number of configurations suited to a broad array of public, educational and corporate environments.

The company is also set to unveil Mango, a personal workspace with an acoustic privacy screen and writing tablet with changeable positions for quiet and private working. Arm shelves and power options provide additional work surfaces and connectivity while dual density foams support the user with storage underneath the seat area. An upholstered return screen enhances the privacy and acoustic properties of the workspace and is available in left- and right-hand versions. It also can be added to the front of the unit to further enhance user privacy.

“Our new flagship showroom helped create a real buzz at last year’s show, but this year we’re aiming even higher,” says Brian

Murray, owner and founder of Boss Design.

Cocoon

➔ Boss Design has expanded its soft office furniture collection with the introduction of Cocoon, a freestanding, single piece, high-back seating unit that creates a meeting space for informal environments.

Comfortable and ergonomically sound, Cocoon’s upholstered structure absorbs ambient background noise, providing privacy from the surrounding environment without the need for interior substructures. Combining the sit and posture of a traditional desk and task seat with the comfort and feel from a sofa, Cocoon’s high sides, back and roof offer privacy to users. It also lends itself to being easily relocated and reconfigured within the workplace.

The Cocoon Media Unit can be used as a standalone piece or in conjunction with the Cocoon high-back units. It will work for team meetings, collaborative tasks or as a base for the day. The unit can be specified with an upholstered back panel to incorporate TV or an upholstered panel with a fixed whiteboard.

“Cocoon effectively breaks up large open plan spaces with exceptional seating, and when linked with the media unit, it houses the latest in technology in one striking place,” says Jeff Thompson, Boss Design North America president.

Boss Design’s soft office collection also includes Shuffle and Cega. Both can be used to create flexible working spaces for office functions associated with soft upholstery, such as personal touchdown and breakout areas, meeting spaces and even partitioning.



*BuzziSpace [10-111]***BuzziSpark**

➊ BuzziSpark offers an escape with a twist, designed to pull you in and out of a stressful moment. BuzziSpace debuts BuzziSpark, a new design by Alain Gilles, available spring 2018. Designed with lobbies and communal spaces in mind, BuzziSpark invites you to relax into the comfort of an acoustic shelter while you wait.



The flexible, modern design blends open lounge space with private nooks to enjoy a moment of peace and quiet or spark up a conversation with a neighbor.

“Until you plunge yourself in its cocoon, you won’t know ‘who’ or ‘if’ someone is sharing the same experience,” said Alain Gilles, designer. “You may run into another nomad with another story looking to escape from the everyday and make a new connection,” said Gilles.

The magic of BuzziSpark lies in the allure of the unknown— the surprise of not knowing whom you’ll meet around the corner. From the outside, nobody can see who you are talking with or overhear your conversation. While sitting in the lounge, users will enjoy the benefits of acoustic privacy walls.

In open offices BuzziSpark can be used to create a private meeting space or alternative workstation without distraction, encouraging uninterrupted focus. It is an ideal solution for reception, lounge areas and break-out spaces alike.

BuzziSpark is available in four different configurations, including BuzziSpark Original, a contemporary *tete-a-tete* lounge, which is available in a large three seat model and a more compact two seat configuration). The collection also includes a spacious BuzziSpark Sofa as well as a private single seat lounge chair. Mix-and-match shield heights to achieve various levels of privacy and sound-control.

Claridge [7-2062]

PRO-TACT Ballistic Panels

➔ Visual display and writing surface manufacturer Claridge Products has introduced PRO-TACT Ballistic Barriers, an extensive range of bullet-resistant, modular, space-dividing panels for public spaces.



“PRO-TACT Ballistic Barriers provide a level of enhanced safety that bridges the gap between body armor and structural blast protection, and they’re as unobtrusive as any commercial office dividers,” says Kurt James, Claridge marketing director.

Designed for secure environments such as military installations and recruitment centers, airports, worship centers, courtrooms and schools, the barriers integrate discreetly into interior environments while providing enhanced protection for a building’s occupants and visitors.

The panels are available in stationary and mobile versions. Finished surface options include porcelain enamel steel markerboard or fabric tackable surfaces in a choice of 10 colors.

Clarus [1033A]

View

➔ Clarus has announced the launch of its newest product, View — a glare-resistant, high-definition, glass projection surface.



The Clarus design team spent three years engineering View’s patented, micro AG 32 technology that combines the writing surface with a theater-quality, high-definition projection experience.

The patented design allows for diffusion of light, creating a crisp, professional-quality image. Lights on, it’s a clean, efficient writing surface; lights off, it’s a high-definition projection surface.

View is available in three standard sizes, with a clear or matte finish, and optimized for a 16:9 projector output ratio. It installs easily into any drywall surface with no need for reinforced walls. View is made with eco-friendly and recyclable materials, while staying true to the timeless, clean aesthetic of all Clarus products.

*Coalesse [300]***Lox Product Line Enhancements Enhancements**

➤ Designed by PearsonLloyd, the minimal and sculptural Coalesse Lox chair features a bucket back and padded interior. It is now available with a five-star polished aluminum swivel base and optional hard or soft casters. Lox's polyamide shell, which was previously only available in black or white, is now offered in greige, a mid-tone neutral that supports dynamic, multi-purpose spaces with a clean, minimalist solution for a variety of collaborative workspaces.

*Community [3-111]***Bryn**

➤ Bryn, by Community, is a modern, minimalistic seating collection designed with strong vintage references within a contemporary and forward-thinking aesthetic. The clean, Italian design mixes a delicate silhouette with a strong versatility culminating in a chair that seamlessly blends in the most diverse interiors.



Pull up a chair for lunch or sit down and collaborate in a meeting - with Bryn's multi-functional offering, all is possible. Available with and without arms and in standard, counter, and bar height models, Bryn prides itself with ease of application in different furnishing contexts. Whether in a trendy corporate office or your favorite bakery down the street, Bryn's aesthetic and comfort are sure to please and complement the environment.

Select from a modern and trendy palette of five plastic colors, a variety of wood finishes, endless upholstery options, and three metal finishes to create a personality all your own. Constructed with the quality you expect from Community, Bryn is built to exceed BIFMA standards while maintaining its simplistic flair, clean lines, and straightforward components.

Davis [3-115]

Poise Occasional Tables

➔ Poise Occasional combines function and style flawlessly. A variety of heights and finishes allow Poise Occasional to fit in any need in every environment.



Following the success of the Poise laptop table, Davis is introducing Poise Occasional by designers Jehs+Laub. Poise Occasional is simplistically intriguing. The minimalistic approach to design means this collection will fit perfectly in any setting.

Poise laptop tables were designed to be convenient for use anywhere you could imagine. Poise Occasional follows that thought as well, with a variety of heights and table top sizes to fit any need in every environment. Poise Occasional tables are available in round, square, or squircle tabletops with unique heights, perfect for nesting. The universality of Poise's design allows this

collection to be highly customizable to any space.

Poise combines function and style flawlessly. Each detail is accounted for, down to the distinctive welding process utilized in manufacturing. Poise bases are constructed from laser cut stainless steel panels. A unique welding process is utilized to create a truly invisible connection. With a refined, architectural aesthetic, Poise tables are simple yet striking additions to any environment.

Available in a variety of top finishes, Poise has a finish option to complement every space. A wide range of veneer options are available, along with solid white acrylic or innovative soft-touch Fenix laminates. Poise bases offer a Stainless Steel finish or can be powder coated in standard Davis finishes.

Tango

➔ Tango represents a marriage of classic and contemporary, a timeless style in a distinctly modern design.



Tango represents a marriage of classic and contemporary— a timeless style in a distinctly modern design. This bent plywood chair exudes style with a variety of options to give it a fun and relaxed appeal or an elegantly sophisticated aesthetic. Tango's unique design is sure to make a statement, no matter the application.

This low-density stacking, bent plywood chair combines graceful lines and a unique structure to create a distinctly modern design. Tango offers three base options – four leg steel, wire, or wood. Tango's construction allows for a unique range of upholstery options including fully upholstered with choices for contrasting materials. The chair itself is available in oak and walnut veneers with painted options in white and black. Tango is the

embodiment of elegance with a fresh take on sculptural design.

*Decca [333]***SuperSpan**

➤ SuperSpan creates a central technology charging, lounging, work and/or dining hub with a comfortable, relaxed humanistic approach to seating.



“SuperSpan was designed to be more than a ‘traditional’ sofa...my invention was to create a platform to anchor ancillary spaces in a way that was both comfortable and adaptable,” explained Brian Graham of Graham Design.

*Encore [336]***Faction**

➤ Faction brings a dynamic presence to the work scene with sporty design elements, a user-friendly weight-activated mechanism and an impressive lineup of arm styles and back height options. Its sculpted back effortlessly bends and curves to integrate seamlessly with the arms, creating one sinuous form that envelops the body and provides ongoing support.

Enwork [11-118]

Zori, Surf, Adventure, Foundation and Equilibrium Table and Credenza

➔ It will be a noteworthy year at NeoCon for Enwork as it brings six new products, a refreshed brand identity and a completely remodeled showroom to the event.

Focused on tables environments, Enwork is bustling with activity as the corporate and education markets continue to have a strong appetite for training/classroom, conference and open-plan



Adventure Table



Zori Collection

products. “The first quarter was really busy for Enwork as we hit unprecedented revenue growth levels” says Enwork Owner and CEO David Powell.

The new products include two comprehensive classroom/training table collections, Zori and Surf. “It is an exciting time as we’ve identified several new opportunities in the market and look forward to launching these solutions at Neocon,” Powell says. “Innovation and speed to market is our primary focus to meet designer needs. Cool products that people crave is what we want to do.”

New round table and credenza storage models have been added to the Equilibrium collection. Additionally, updated Cambria materials are available for use with the popular landing team tables. Powell says he thinks the new family of products will be seen as “fresh and innovative.”

Enwork’s Adventure table is designed to inspire casual conversations throughout a variety of spaces. A built-in steel trough can be chosen to deliver power and manage cords, or turnbuckles can give a more modern, industrial aesthetic. Dozens of finish options from metal paints to wood veneers and other material varieties are available. Adventure tables come 24- to 60-inches deep and 72- to 144-inches wide, in seated or standing heights.

At NeoCon this year, Enwork’s new brand experience will be on display in its remodeled showroom on the 11th floor.



Surf Tables Collection



Equilibrium Table



Foundation Quartz Team Table

ESI [11-101]

Birdi



➔ The Birdi perching stool helps you be on the move and stay active during your day. It can rock, tilt, swivel or be stationary all while the user is comfortably seated. The proprietary seat cushion design reduces pressure points, improving comfort over other perching stools. With 10 inches of height adjustment, it is an ideal work gear solution, whether you are sitting or perching, in any environment.

Lotus



➔ The Lotus series sit-to-stand workstations are designed to be easy to use, adjustable, and worry-free. All models are engineered for durability, to transition from sitting to standing multiple times a day. Embrace comfort and movement for greater workplace wellness with the Lotus series. Workstations crafted to seamlessly help you be on-the-move and stay active during your day.

Geiger [318]

Reframe



➔ Reframe Lounge Furniture delivers comfort and a distinctive aesthetic to working lounge areas. Lounge chairs are built on a common base structure, with three back heights available: a mid-back designed to encourage conversation, a wing-back designed to be more closed and protective for greater focus, and a high-back designed as a functional blend of the two. Used thoughtfully across an office landscape, Reframe Lounge Furniture can help activate a mix of collaborative and individual work settings.

Global [1035]

Intelli Beam



➔ Intelli Beam brings forward a new era of open plan environments. The elevated beam combines the capability of panel systems with the style demanded in today’s work and education spaces. Intelli Beam is driven by smart, modular design that powers individual workspaces and collaborative areas.

Intelli Beam unites capability and style with a variety of extension kits. Height options, privacy glass and leg choices support both seated and standing work. Extension kits are available in tackable fabrics, frosted or clear glass, and laminate to blend seamlessly into existing decor. Intelli Beam integrates with FreeFit and Foli height adjustable tables, Bungee, Junction and 2gether tables, and pairs with Global metal or laminate storage.

Backed by Global’s Lifetime Warranty, Intelli Beam is made from recycled materials and is 100% recyclable. The series is Greenguard and Level 3 certified as part of Global’s commitment towards LEED building status and a better environment, inside and outside.

Sleep-Eez



➔ Sit, relax or rest in comfort on the Sleep-Eez compact sleeper chair. Easily operated by one person, Sleep-Eez can be used as a chair, a chaise lounge or a bed. The sleeper chair extends into a generous 24” by 77” sleeping surface without requiring additional wall clearance. Sleep-Eez is easy to reposition with two non-swivel manual locking casters on the front and two swivel non-locking casters on the back for better steering when moving the chair. Available with solid wood or self-skinned urethane (SSU) armcaps in all standard Globalcare finishes.

Groupe Lacasse [1000]

Radiance



➔ Massimo Costaglia has designed a new chair — Radiance — for Groupe Lacasse.

As an industrial designer and inventor, Costaglia has collaborated with many Italian and foreign companies focusing primarily on contract furniture projects. He designed Radiance with ergonomic comfort in mind. The high-quality, height-adjustable mesh and upholstered backrest options provide responsive support to

adapt to each user's physiology and ensure a high level of seating comfort. The chair is offered in a choice of three mesh colors or with a fully upholstered backrest. A stool version also is available.

Easily accessible controls ensure perfect posture can be achieved from a seated position. A refined synchronized seat and back movement can be set in free-float mode for support or locked in an upright position. Seat depth and back tilt adjustments are available as standard features. Fixed, height-adjustable or 4-D arms (with lateral, rotational and width adjustment features) complete the contemporary design for management seating at a competitive price point.

Hip Hop High Back



➤ Whether you want to create private zones to focus on your work or collaborative areas to share ideas and socialize, Hip Hop High Back is the perfect modular soft seating collection. With its vast array of shapes, upholsteries and configurations, possibilities are almost limitless. The height of its modules help reduce sound and create an ideal area to meet your partners and colleagues. Discover its clean lines aesthetics, and design inviting configurations with a touch of privacy. Let yourself be seduced by the exhilarating rhythm of this collection.

Hip Hop High Back is perfect for open spaces and public areas; it gives many possibilities to divide space without the use of panels or wall systems. Perfect for creating media areas, Hip Hop lets you have meetings without sacrificing comfort. The 49 inches high modules are not only splendid, they also give users privacy and help promote collaboration.

With its wide range of models that include 3 different radiuses and 3 different degrees, Hip Hop High Back is very versatile and offers limitless configurations. The collection has many cool options such as electric modules, under the shelf hook and laminate back tablet. Hip Hop High Back features 16 different shapes with a choice of 2 leg types including a beautiful polished chrome finish. It also easily adapts to any décor thanks to its extensive selection of laminate finishes and upholstery choices. An endless source of inspired combinations.

IO

➤ IO seating collection is designed to suit-up meeting spaces and bring the final touch to inspire collaborative environments. With its elegant design, IO transform your space and gives it a unique style. Different perspectives in red, black or white gives you a splendid collection that covers your needs, may it be in guest or café height applications.



IO is practical, not only because of its light-weight but also for the guest chair's capacity to stack. The one-piece polypropylene construction is very easy to clean, which is more than necessary for any high traffic areas. IO serves its purpose brilliantly... while looking fabulous!

Sleek silhouette, comfort and style allies in this Italian design by Paolo Favaretto. IO brings personality to any environment thanks to colored shells, silver metal legs and optional seat pad, available in a vast array of beautiful upholsteries. Not only that, IO's backrest has a slight flex effect for optimal comfort. This contemporary design chair is the perfect choice for any creative infused environment.

Do not be fooled by IO's lightweight look, this high impact polypropylene shell seating collection is robust and of high quality like all other United Chair products. Groupe Lacasse is committed to market durable products and the new IO collection will certainly stand the test of time.

mitted to market durable products and the new IO collection will certainly stand the test of time.

Groupe Lacasse [1000]

Nex



➔ NEX is the genesis of modern and urban office furniture. Its design redefines and pushes the boundaries of traditional office furniture architecture by incorporating next generation functionalities. It is a closed office and workstations collection based on a hybrid product architecture blending freestanding and modular components. New enhancements target mainly well-being at work through height adjustability and collaboration within the workspace.

For height adjustable desk, the solution resides in concealing and integrating seamlessly all mechanical and technological components, inside and out. NEX offers just that, a natural and elegant design, combined with practical ergonomic capacities. This collection is built with a powerful mechanism, intelligent software and sliding access panels to manage wires. Adding a modular media unit allows collaborative and sharing presentation layout into the office without altering the walls, remaining 100% freestanding. Not only that, but all wires and cables are perfectly concealed into the desk, keeping a consistent design line.

Offering a complete modular approach, NEX is all about flexibility. With full modular compatibility it is possible to configure your workstation using surfaces, storage, modesty panels and accessories in an endless amount of possibilities. With uneven landscape and varying volumes and proportions, the NEX enhancements will truly redefine visual references and appeal to customers willing to make their mark and embrace the future. Its volumetric approach combined with concealed mechanism for the height adjustable desk create a modern and sophisticated work environment.

*Gunlocke [1126]***Calia**

➤ Calia, a new chair from Gunlocke, manages to bridge the gap between the brand’s classic wood furniture and the ever-increasing modern furniture types that continue to emerge from the company.

“When the project began, the design was intended to be much more modern,” says designer Brad Ascalon. “Through our process of integrating a stronger brand identity into the work, everyone involved, myself included, realized that we could pull back a bit, somewhat blur the classic and modern boundaries, while still offering the market something beautiful and new.”

The inspiration behind Calia was the heritage of the Gunlocke brand. The goal was to merge frame and upholstery into a singular form that speaks to the brand’s more than century old history of wood craftsmanship and its continuing evolution. The angle of the back legs is purposely severe to suggest a dynamic movement and shift of the brand. The back of the frame uses the old-world technology of steam bending, emphasizing the grain detailing and adding strength to the overall construction.

*Gunlocke [1126]***SileaEH**

➔ Building on the successful Silea casegoods brand, designer Mitch Bakker, principal of IDa Design, wanted to expand the possibilities across the workplace with SileaEH by providing furniture applications in both closed and community spaces, broadening the materials and options available, and incorporating height adjustability into the aesthetic of the product.

“SileaEH is extremely versatile and beautifully imagined with a breadth of materiality to suit an array of tastes, while staying sensitive to budget,” Bakker explained. “Today’s work environments are ever-evolving, and SileaEH creates spaces that not only speak to a work style, but addresses times of privacy, times of collaboration, and times of mobility.”

IDa designed enclosed office spaces suitable for the executive, minimal footprint and minimal aesthetic offices, and applications suitable for small enclosures used for private calls and touch-down work.

“Focused work and privacy are necessary for productivity,” Zach Raven, IDa Design Lead stated. “We didn’t want to lose sight of that in the redesign.”

Multiuse office configurations with collaborative extensions, small meeting tables, writable surfaces, and media-enabled tack zones can transition a private office space into a guest presentation and interaction area. This same office easily then morphs into a lively teaming space.

From the shaping of new work surfaces to the non-handed pulls, the gracefully modern aesthetic of SileaEH is intentionally designed to accommodate individual taste and workstyles – down to the smallest detail. SileaEH flexes for the way people really work, with sit-to-stand adjustability, seamless integration of technology management, and components to connect thinkers and facilitate collaboration. This includes mobility in the communal space. The SileaEH Workwall – in both free standing and wall mounted versions – and the Lounge Level Media is a perfect complement to the casual meeting space, as well as the ideal touchdown space for the worker on the move.



SileaEH material options start with Stratawood, a rapidly renewable, reconstituted, straight-grain veneer, flat cut, as well as quarter cut natural veneer; thirteen laminate options; and four paint options for the chassis and main components. Other materials provide choices for environments seeking a mixed-material look, including six back-painted glass options, three solid surfaces, and four metal finishes.

HBF [387]

Fulton Collection



➔ The Fulton Lounge Chair is the latest piece designed by MNML's Scott Wilson for HBF.

First released with a rocker version at NeoCon 2017, the new chair features an upholstered lounge of generous proportions and industrial legs that add an edge to it. Upholstered in three ergonomic areas for comfort, the lounge cocoons the user slightly to minimize audible and visual distractions for the evolving workspace or cafe.

"The Fulton lounge is a thoughtful solution to the modern office," says HBF President Dan Chong. "It provides both comfort and high design, and we're pleased to further expand on Scott Wilson's amazing initial Fulton rocker."

The chair is cushioned in the lower back and seat and offered in both ash and walnut. The inner shell can be upholstered in the user's fabric of choice. This piece is equally at home in residences as it is in hospitality or commercial spaces.

MOD

➔ HBF has joined forces with award-winning Swedish designer Henrik Schulz to design the ultimate collaborative seating solution: MOD. Inspired by the activity-based workplace, MOD looks to establish the new normal of today's office -- offering an elegant seating line of sofas, settees, chairs, benches, and ottomans with a modular sensibility.



"The international workplace is in a period of transition, moving away from enclosed cubicles towards a new landscape that is more human, collaborative, and adaptable," says Henrik Schulz. "In Scandinavia, this workspace has been the norm for almost two decades, but the design movement is incredibly inspiring to me as a designer."

MOD is designed to fit any aesthetic and can take on fresh life depending on the finishes and fabrics selected for it. It is available as a three-seater sofa, a two-seater settee, chair, ottoman, and in various benching sizes. The sofa, settee, and chair are avail-

able with or without arms. The cushions can be upholstered in any HBF Textiles fabric/leather or COM, and the legs can be finished in a variety of colors (black, white, grey, polished chrome, satin chrome, and bronze).

Herman Miller [321]

Cosm



➤ Sit in Cosm, and you just might forget you're sitting in a chair at all. Its sophisticated ergonomic design instantly responds to your body, movement, and posture to provide natural balance and total support. No matter who sat in the chair before you, how long you'll be in it, or what you'll be doing, Cosm gives you a new experience of comfort – anywhere you work.

Lino



➤ Lino is a high-performance seating line consisting of a work chair and stool from Herman Miller that lives at the nexus of comfort and value.

Lino brings scientifically-backed comfort and a wide range of aesthetic options to the workplace or home.

Herman Miller [321]

Introduces Living Office Settings



➔ To create environments that work in harmony with people, Living Office Settings uses an organization's workplace strategy as a guide to align surroundings, furnishings, and tools so work flows seamlessly in every setting. In addition to the benefits of a streamlined buying and specifying process, Herman Miller customers will save time and money by working with all partners at once rather than implementing individually.



Introduces Living Office Overlay



➔ Designed to transform an open floorplan, Overlay is a system of sub-architectural, movable walls intended to help you define your space. Use Overlay to create freestanding rooms, give shape to large open spaces, or simply divide one area from another.

Because Overlay can take mere hours to relocate, your office could function as one space today and by tomorrow, serve a totally different purpose all without calling the contractor.

HPFi [7-5062]

Axxess Guest Seating

➔ HPFi is introducing the latest addition to its collection of guest/reception seating. The Axxess series offers many of the same features available in the Unos, Trados and Trados Metal series. A sleek, wall-saving wood frame with heavy duty steel cross braces provides a capacity of 350 lbs. per seat. Axxess is available in all standard HPFi wood finishes with Sentinel antimicrobial treatment included.



Axxess is offered in several versions - arm chair, armless chair, bariatric chairs and multiple versions of ganged configurations. The frame structure and an integral hook and loop fastener system enable easy field replacement. Axxess is can be upholstered with contract

fabrics from each of our core upholsteries partners. HPFi also welcomes the opportunity to upholster in two-tones or the customers' own material (COM). "The HPFI Axxess guest seating is a versatile family of seating" said Doug Gaines, Vice President of Sales for HPFi. "It is designed to offer a mid-market price point with high end quality and style."

Boost

➔ We've been hearing that "sitting is the new smoking". Sitting for long stretches every day does have a number of health consequences. The latest implication is that more time you spent sedentary can impact your brain health as well as physical health. You don't have to move very much - just standing can help.

Standing can increase blood flow to the brain to facilitate thinking. But doing office or school work while standing conflicts with what we were previously taught. Maybe it was wrong to "sit down and focus". Maybe it is time stand up and Boost your creativity and thinking.

Boost tables feature adjustable height work surfaces for easy transition from sitting to standing position. They are available in single or dual stage with "T" or a cantilevered "C" style leg.

Parsec Pull-Up Table

➔ HPFi (High Point Furniture In-



dustries) announced the latest companion to its collection of lounge seating. The Parsec pull-up table is a perfect complement to support collaborative work and school tasks. Pull this auxiliary work top close for a temporary writing surface or support of mobile electronic devices. Its low profile base allows the table to be used with HPFi lounge seating series. Parsec is an ideal companion for the Flex collection of tiered, ottoman and lounge seating..



The gently curved top is 1” thick and features a waterfall radius edge for optimum comfort. The Parsec work surface also features a sweeping radius on all 4 sides for a unique shape and a generous 18” x 12” work area. The upright post is offset on the steel base, but also has a gentle arc towards center to offer maximum access while seated.

“Parsec is the perfect personal table design to compliment the individual space experience” said Doug Gaines, Vice President of Sales for HPFi. “The design of this table will

work with virtually any HPFi lounge seating line.”

Timbre

➤ Timbre stools feature polypropylene seat and back engineered for comfort. The open design of the back not only is aesthetically pleasing, but offers a cool, breathable surface. The two-piece clam shell construction of the seat also ensures a comfortable respite for longer-than-expected conversations at a Matrix touch-down table or behind an eve banquette.



Select any upholstery from the HPFi core suppliers or COM (customer’s own material) to soften the aesthetics and comfort of the seat.

*Humanscale [351]***Summa**

➔ Summa, Humanscale's first executive boardroom seating product for today's C-Suite leaders, is pure function and simplicity.

Summa features a sleek, clean aesthetic from every angle and, unlike most chairs which have exposed levers for adjusting height, recline and tension, Summa's height-adjustment lever is seamlessly integrated into the seat. Like all Humanscale chairs, recline tension is automatically established by the sitter's weight. For added support and comfort, the chair also features integrated armrests that move with the user as the chair reclines.



For nearly twenty years, Humanscale has created high-performance, supportive chairs with a weight-compensating recline - instantly accommodating each unique sitter by automatically adjusting to his or her weight. Providing long-lasting ergonomic comfort, Summa is one of the brand's first entries into the C-Suite landscape and the result of a design collaboration with Gensler, the world-renowned architecture firm. While designed for boardrooms, Summa's versatility takes it from the corner office to the boardroom to the executive home office.

"Comfort and the ability to move freely are important everywhere in an office — including the boardroom," says Humanscale Founder and CEO Robert King. "We are thrilled to offer a simple and elegant executive chair that elevates the sitting experience."

QuickStand Eco



➤ Humanscale is now introducing the next generation in portable sit/stand products – QuickStand Eco. This new height-adjustable solution is sleeker, easier to install and comprised of more sustainable materials than ever before. QuickStand Eco utilizes minimal parts and pieces, limiting its environmental footprint and maintaining a minimal, clean aesthetic. It features simple setup and is easy to transport, making it a flexible option for both corporate and home offices. The effortless and instant height adjustability encourages users to sit and stand more often and the product can also be integrated with Humanscale’s innovative OfficeIQ software, which sends periodic alerts when it is time to adjust one’s position. QuickStand Eco complements a variety of workplaces and is designed to remain good-as-new in both appearance and functionality, even after 10 years of use.

The launch of QuickStand Eco coincides with a new wave in flexible workplace design. Many companies continue to move away from the “one size fits all” standard and now offer sit/stand offerings for all types of workplaces and styles, Humanscale ensures workers can now find the workspace solution best suited to their individual needs, and stay healthy in the process.

Humanscale offers a variety of ergonomic workstation options and QuickStand Eco, its newest product, is designed to accommodate users of varying heights. It can hold up to 35 lbs, is available in laptop, single or dual monitor configurations and offers 18” of work surface adjustment. With a selection of sit/stand offerings for all types of workplaces and styles, Humanscale ensures workers can now find the workspace solution best suited to their individual needs, and stay healthy in the process.

Humanscale [351]

Smart Ocean Chair

➔ Humanscale has come out with the Smart Ocean chair, an adaption of the legendary Diffrient Smart chair.

Sourced from Humanscales' partner Bureo — an emerging venture developing solutions to prevent ocean plastic pollution — this is the first tangible product of the partnership and marks the first product available to purchase from the consortium of companies under the NextWave initiative.



“Fishing nets comprise approximately 10 percent of the plastic pollution in the ocean today,” says Humanscale Founder and CEO Robert King. “Our partnership with Bureo helps further our goal to achieve a net positive impact on our natural environment. The Smart Ocean task chair not only supports the health and comfort of our customers, but actually removes plastic from the ocean, supporting the overall health and well-being of a greater ecosystem.”

Almost two pounds of fishing net material (NetPlus) are used in the production of the new task chair. It comes from Bureo's Net Positiva recycling program, which helps collect discarded plastic fishing nets and provides incentives to participating coastal communities. The nets are transformed into plastic pellets and used to manufacture products such as skateboards, sunglasses and — for the first time ever — an ergonomic task chair.

Founding members of the NextWave initiative, Humanscale and Bureo are leveraging supply chains as a means of keeping plastics out of the ocean. Smart

Ocean is just the first solution to come to market. Humanscale plans to replicate material solutions across its product line, supporting the expansion of Bureo's recycling program and lowering dependency on new plastics.

The like-minded companies share a common mission to achieve a net positive impact and are certified by the Living Product Challenge. Humanscale was the first company in the world to receive full certification in September 2016.

Embarking on a journey to disrupt material sourcing, the two companies will work together to promote environmentally friendly design solutions.

“Focused on scaling and replicating our programs to collect and recycle discarded fishing nets, we strongly believe in the force of collaboration to align initiatives and expand impacts,” says David Stover, Bureo's co-founder and CEO. “The result is measurable and outcomes tangible as we work to prevent waste in our waterways and oceans. By joining forces with Humanscale, we are able to work cooperatively to innovate economically viable supply chain solutions that are expanding the new economy for previously discarded materials.”

*Indiana Furniture [1054A]***Square One**

➔ Indiana Furniture continues to set new standards for affordable, design friendly products with its new space division series, Square One.

The series offers a clean, simple way to provide space division, functionality and architectural design to any zone within the working environment. With individual building blocks that securely connect to one another and accessories like dry erase boards, acrylic inserts, tackable panels and acoustical panels, personalization of Square One is only limited by one's imagination.

"Square One easily defines space between workers and creates areas within the open plan to encourage collaboration or allow for focused work and conversations," says Mike Blessinger, vice president of sales and marketing for Indiana Furniture. "It installs quickly and can be effortlessly reconfigured as needs change."

"This product epitomizes the warmth and beauty of wood, one of our core competencies, and provides a solution for all audiences and style preferences."

Square One was designed by Indiana Furniture in partnership with Keith Metcalf of Design4U. The idea behind the environment-changing design was to offer a wood-based, visually interesting space division product without sacrificing everyday function, to allow for design freedom, optimize the cost of ownership and to create architectural elements without the need for additional construction.

*Innovant [391]***beSpoke**

➔ Innovant's new beSpoke was initially designed to function as a bench or an L-shaped workstation, but it has evolved into a sophisticated family of customizable components that can be free-standing or integrated. This makes it a much more refined aesthetic than other systems, and it can be used throughout an office, from a stand-alone table to conference rooms and private offices.

Multiple options are available for power and data raceways either above the desktop or below. Compartments within the storage elements provide access from the floor. Combined with wall treatments and expanded storage, beSpoke can be extended into the private office environment for a consistent aesthetic and efficient use of components. BeSpoke will be available for order after its NeoCon debut.

*Jabbrrbox [7-3082]***JabbrrX**

➡ After the launch of a successful pilot program at LaGuardia Airport, Jabbrrbox introduces JabbrrX, cutting-edge IoT workspace solutions, at NeoCon 2018. Designed for use in open and semi-public spaces, the on-demand consumer amenity offers the perfect environment for on-the-go work, well-being, and privacy. JabbrrX will be available for use in Jabbrrbox's booth. There will also be two JabbrrX units located on the Mart's second floor adjacent to Marshall's Landing, where they will remain permanently, marking their second public installation. NeoCon attendees will receive complimentary 15-minute access during the show. In addition to offering attendees a chance to test drive the JabbrrX, Jabbrrbox's booth will also offer visitors a place to hang out, rest, and recharge in the JabbrrLounge, featuring Gunlocke and HBF Textiles. It will also showcase a Jabbrrbox One unit, Jabbrrbox's in-office workplace solution.

*JANUS et Cie [310A]***Hatch**

➔ JANUS et Cie, along with designer Michael Vanderbyl, introduces Hatch, a love song to sailing. Vanderbyl, who grew up sailing in San Francisco since he was nine years old, is an avid yachter, and even designed and collaborated with America's Cup. His experience and passion shows in every aspect of the comprehensive teak collection. Inspired by the beauty of a classic sailing yacht, Hatch combines historic influences and marine craft technique with a distinctly modern approach to design. The result is pure elegance and simple practicality grounded in fine materials. Premium teak is crafted to replicate the traditional hatch of the finest cruising and racing yachts, paired with a sleek frame finish to reference the silver sheen of anodized masts or the pristine white of sails and hull.

Hatch expresses an authentic love of the sea and sailing, along with pure lines and precise workmanship. Diverse dining ensembles and numerous lounge configurations are offered, including a versatile modular assortment with varied occasional tables, as well as luxurious chaise lounges and a chic serving cart. Appropriate for interior and exterior settings alike, Hatch is as well suited to a contemporary home in the city as an elegant cottage in the Hamptons. The collection is equally fitting for corporate suites, fine hotels and the first cabin of a classic luxury yacht.

JSI [3-111]

Flux



➤ The open plan is in a constant state of change. Whether designing for free-address mobility or assigned benching, open collaboration or private, heads-down work, Flux Open Plan brings order to the unrest.

Designed by David Allan Pessa, Flux Open Plan is an extension of the Flux casegood line that adapts to the way you work with an extensive offering of height adjustability, smart storage, and modern materials.

Create straight rows of benching or a more dynamic layout with 120° tables. Sit-to-stand in a variety of ways; whether integrated into casegoods, supported by an H-frame, or simple freestanding tables. A center rail between two Flux worksurfaces holds suspended power units and wire baskets. Privacy panels can be added above the surface, either mounted in the center rail or to the edge of height adjustable surfaces.

Flux storage lends a hand through credenzas, towers and pantry wardrobes. A wide variety of functional accessories can clamp to the table's edge to keep clutter off the surface. Lockers offer a home for additional items away from the workstation and can create privacy between rows of benching.

Match your private offices to your open plan with a cohesive palette and aesthetic. Elevated casegoods on metal legs create a light scale, progressive look. Or keep it simple with on-the-floor casegoods. Flux's material offering includes veneer and laminate, woodgrain or solid colors. Metal finishes include Arctic Silver, Soft Nickel, Pewter, and new to the offering: Matte Black.

Keilhauer

Untucked collection

➔ At NeoCon, Keilhauer unveils its newest furniture collection: Untucked. The new soft contract collection is designed to encapsulate the concept of individuality and cohesion that applies to today's casual workplace. Designed for Keilhauer by EOOS, Untucked features 10 different choices of seating and tables that boast unsurpassed comfort, a casual at-home style and a purity of purpose. From conferencing and team break-outs, to one-on-one's and solo work, each piece is carefully planned and built to perfectly support any of the work and break functions we take away from our desks.



A TOOL FOR EVERY JOB

The Untucked Collection is designed according to the belief that people will work better when in an environment flexible to their needs. It is designed to support quiet work, ranging from the solitary to the one-on-one; loud work, from team huddles to client presentations; and to create lounge areas where employees or guests can wind down or energize. Designed with pure intent - each piece of Untucked fulfills one specific need to perfection. This focused approach had a profound influence on the collection's design language: "Untucked includes strong individual

characters that interrelate and play to together,” explains Martin Bergmann, EOOS. “Rather than designing multifunctional pieces, each chair is intended for a particular purpose. It performs one job perfectly.”

ORGIN

Orgin brings comfort to your next conference. Its embracing structure is created using two adjoining cushions, gently padded with foam, and an arm silhouette new to Keilhauer – one which incorporates the best features of open and loop arms to form a pi-like (π) shape. Ingenuity hides Orgin’s fully ergonomic functions from view, leaving the conference chair to present with a deceptively simple form. Knee tilt functions are entirely internal, as are the spring mechanisms which



Untucked Conferencing, Origin, Parlez and Awla

allow for the seamless absorption of seat and back pressure. Perfect synchronization of movement in the chair’s seat and back is owed to a uniquely engineered connection at the two pivot points, allowing users to lean back to any angle or posture they desire with full support.

PARLEZ

The modular bench system Parlez can be scaled up or down to accommodate group chats and

team huddles of any size. The numerous possible configurations are each designed to create an open and welcoming space that can flow into the larger, surrounding environment. Various lengths and components can be configured with and without interconnected tables and arms.



Keilhauer Untucked Lounge. Parlez, Rove, Oro, Geometry, 141, Awla

141

The 141 bench is the newest manifestation of the “magic angle of communication.” When developing the award winning Talk series, EOOS and Keilhauer determined that when two people speak, they naturally turn towards each other at an angle of approximately 141 degrees. By employing this angle into seating design, the piece itself mimics human body language and encourages a natural flow of conversation. Like Talk, 141 is designed to encourage conversation; however, its refreshed look is softer, more informal, and more suited to today’s dominant design trend: residential. The optional privacy panel blocks visual and auditory distraction; piped edging and clean lines provide high design value; and the unique V-shape encourages eye-contact and meaningful dialogue. In short, 141 is the perfect seat for a one-on-one.

ORO

The most relaxed way to work, Oro is a crossover lounge/work chair. Controlled pitch and large

oar-like wooden arms provide a work surface that can be used for tablets, laptops, drinks, magazines and more. The free-floating appearance of the cushioned seat provides a sense of open airiness which, when combined with the arms' sculpted lines, provides a unique, iconic look.

ROVE

Rove is designed to be the perfect side chair, aka. "that extra seat you bring over when an unexpected someone pops in." Rove's unique shape is inspired by tension and release. Even in the very first concept model, a confined base appears to contain and compress the chair's body. As your track up, Rove's back unleashes up and open - much like a flower bud blooming. This balance of Rove's narrow base and wide top provides visual intrigue that is graphic, warm and welcoming.

OPT

From the back, Opt appears to be a sharp, small seat but, as your circle around, the character of the chair is dramatically changed into a casual, wide-open space that encourages wide-open conversation. With its easel-shaped legs and provocatively curved back, Opt is incredibly eye-catching and the perfect embodiment of EOOS' unique ability to design into a space which always feels current and impervious to trends.

COY

Coy shares the same footprint and dramatic front-to-back reveal as Opt, but with its high, enveloping back and natural acoustical properties it's the ideal privacy chair. "When you look at Coy from outside, the chair demands respect, but when you sit inside, you are cocooned and protected," says Bohmann. "It plays on formality and comfort."

STIX, BLOC & GEOMETRY TABLES

Enhancing the cohesion of the Untucked Collection is a series of three occasional use tables.

The Stix side table is as much a mobile wood sculpture as it is a useful perch for books and beverages. Carved from solid wood, the table's curving lines convey movement and action while generously extolling the virtues of the wooden medium's naturally round form.

During product development, Stix was affectionately referred to as the "weeble-wobble-stable-table," owing to the table's contrasting top and base. "The round tablet-like top, and the solid block base create a harmonious effect," says Bergmann. "The top and the bottom play off of each other to create a perfect table for any use, anytime, anywhere."

The Bloc laptop table creates a dynamic work surface which complements all the seating options within Untucked. "We love the wire base because it's an industrial material that allows us create the most minimal of structures. The base is simply the top in negative space," says Bohmann.

Lastly, the Geometry coffee table series serve to unify the collection. Available in square, rectangular or diamond-shaped form, Geometry unites the individual characters of Untucked and transforms them into active communication hubs.

As with all Keilhauer furniture, the Untucked Collection is built from the highest quality materials, is designed and manufactured to last for many years, and is supported by Keilhauer's standard 10-year warranty.

KI [1181]

Ruckus Mobile Height-Adjustable Lectern



➤ KI has added a new Ruckus mobile height-adjustable lectern to the award-winning Ruckus Collection. The lectern brings more interaction, more mobility and more freedom for teachers and students.

“With the roles of students and educators rapidly changing, learning tools must evolve,” says Shawn Green, vice president of design and product marketing at KI.

In 2017, KI redefined the look and function of the classroom with the Ruckus Collection. The desk’s sit/stand height pneumatically adjusts easily, providing sitting- or standing-height desks for focused or collaborative work. Casters promote flexibility.

The lectern can be specified with a modesty panel, cup holder, book basket or bag hook.

FourC

➤ KI introduces FourC Seating at the NeoCon World’s Trade Fair 2018. FourC takes human-centered design and applies it to task seating for a fully user-adaptable and healthy seating choice.

FourC offers healthful comfort and a sculptural style in the following ways:

- Circulation – FourC focuses on a healthy sit. By enabling proper sitting with intuitive adjustments, FourC improves circulation throughout the body to increase energy and improve comprehension.
- Clean – FourC’s linear back aesthetic portrays a clean, crisp design that elicits movement and easily transitions from space to space.
- Colorful – Body-hugging mesh is available in twelve colors that add energy and vitality to any environment and allow designers to interpret the personality of space.
- Choice – FourC offers of choice of seating styles that make it ideal when specifying an entire environment.



Tattoo



➤ Launching in September 2018, Tattoo is a platform of innovative workplace solutions that allow users to move, manipulate and modify their personal and collective spaces to encourage higher levels of personal privacy, interaction, ideation and reflection. Recognizing the importance of user control over the workplace, Tattoo is unique in that it is the only comprehensive systems solution that can be installed and reconfigured without tools or complexity. Unlike other systems, that are static and complex,

Tattoo offers a virtually unlimited array of workstyle solutions that are user-centric. Tattoo places the user in the driver's seat, without complex rules, downtime and expensive reconfiguration cost. KI designed Tattoo in alignment with human-centered design principles, believing that the true merits of our products designs and their value to our clients is not represented in their physical make-up or key features, but rather in how they help organizations align their cultural, brand and functional needs within a given setting. Innovation in the case of Tattoo is unprecedented control over the workplace.

Kimball [325 N. Wells St]

FiXt, Narrate, Helio, Nate, Natty, Pep and Pairings Nook

➔ Kimball creates environments that foster collaboration, provide an enriching work experience and transform a culture by introducing new ways of working. Featuring these concepts in workplace design and the integration of technology in its latest solutions, the company's Chicago showroom, located just outside the Merchandise Mart at 325 North Wells Street.

The 2018 featured collections echo what is important to Kimball; quality products that inspire, spaces that improve well-being, and a focus on people with the goal of happiness in the workplace.



Pairings Nook

The showroom showcases social and interactive space along with activity based working areas. One of the latest product features in the space fiXt, with a refined take on the industrial look, brings a timeless style to the workplace where design and unparalleled quality meet. Narrate,



Pep



FiXt



Narrate

which epitomizes the future of adaptable design, has a crisp, clean aesthetic and is designed to be an integral component to the open workstation design layout, using end panels to make a statement, insert a variety of materials, or punctuate specific work zones. New seating collections include Helio, with elegant design features that embrace human and natural elements to create the perfect balance of personal comfort and visual continuity. Two new chairs, Nate and Natty, blend appealing style with comfort and versatility, providing a welcome new arrangement to today's work and health landscapes. Pairings Nooks, offers all the seclusion and amenities of an office in the form of an intimate home with options for power, data, lights and workspace. The Pep chair adds energy and interest to spaces. It has a poly shell seat with modern and upbeat design elements that make an eye-catching focal point. As a side seating solution for today's flexible workplace, Pep is both lightweight and sturdy and can be used in formal or casual meeting areas, cafes, lounges or any type of gathering space. It comes in standard four legs, a sled or swivel base and is available in stool height.



Helio

Partnering with craftsman Hennepin Made and Avo through our brilliant partner program, the showroom will feature handmade glass blown lighting and hand-dyed leather end-panel components. Our partnership with these makers, along with our design partners, reinstate our commitment to apply modern craft and develop forward-thinking solutions that help our clients succeed.

Knoll [1111]

Glen Oliver Loew

➔ The Loew chair, designed by Glen Oliver Loew, is a light task chair to support improvisation and spontaneity across the office. Designed for the mobile, connected office, the Loew chair provides purposeful performance for workers as they move across a variety of settings in the workplace. With its modern form and intuitive movement, whether you're just touching down or staying a while, the Loew chair supports you for whatever you're taking on next.

The Loew chair's open form invites you to sit down and break boundaries – just as it refuses to be limited to one category of seating or one type of work. The Loew chair delivers purposeful performance with intentionally simple design, free of complicated mechanisms. An active pivot connects the back and seat and responds to your movements and natural gestures. The curved back offers support for impromptu chats or longer meetings.



Newson

➔ Knoll has introduced the Newson Aluminum Chair by Marc Newson, embodying the company's celebration of 80 years of innovative modern design. Honoring the cantilevered chairs of Ludwig Mies van der Rohe, a forefather of Modernism, Newson's design, 90 years later, is a forward-looking expression that synthesizes simplicity, material and precision, in the Modernist tradition.



Debuted at the 2018 Salone Internazionale del Mobile, Milan's annual furniture trade fair, the radical design reflects Newson's fanaticism for the space age, as well as his belief that, "design is about improving things and about looking to the future, pushing technology forward."

Defined by a single uninterrupted line, the design brings Marc Newson's signature combination of organic forms and precision engineering to the Knoll seating portfolio. Echoing the futuristic vocabulary that characterizes his work, the side chair for Knoll marries hard and soft, solid and transparent, in a striking form that seems to levitate in space.

Commenting on his work for Knoll, Marc Newson said, "Knoll's modernist tradition provided the launchpad to imagine a chair for twenty-first century working and living."

The mesh seat and back integrate seamlessly with the frame, further emphasizing the chair's visual purity. To evoke a more residential feel, Newson selected a mesh that is tightly knit and is softer to the touch.

Rockwell Unscripted Sawhorse WorkBench

➊ Rockwell Unscripted by Rockwell Group – a comprehensive collection of 30 furniture elements across six product categories that adapt to the spontaneous choreography of the work day – creates an unrivaled work experience designed to let spontaneity unfold and people complete the story. The Rockwell Unscripted Sawhorse WorkBench is a workhorse for task or team-oriented work, bringing a constructive spirit to shared workspaces. Sawhorse WorkBench invites you to take a seat, roll up your sleeves and get to work. The warm expression of wood, and welcoming curved and tapered touch-points brings hospitality and an approachable vibe to the workplace. Powerful dividers and cable management make this the ultimate work table.



The Rockwell Unscripted Sawhorse WorkBench brings the utility and constructive spirit of a sawhorse bench into the modern workplace both in function and form. Adaptable to the combination of both the private and open-plan office structures, David Rockwell translated his decades of experience in restaurant and hotel design and applied it to the emerging trends in the workplace. Rockwell knows how to make the people who inhabit his spaces feel comfortable and in control – the protagonists in dramas of their own making – and it’s this same sense of hospitality and empowerment that office workers, liberated from their desks by wireless technology are seeking. “There’s a lot of joy in the objects,” Rockwell says of the collection. Referring to the theater analogy at the core of Unscripted, “they represent the figure – a person – and so are the dramatic elements in this play that we call work.”

People spend more than half of their time engaged in group-based work, but for heads-down work they often are leaving their offices to take refuge in coffee shops, parks or hotel lobbies to answer emails, write without being interrupted and make business calls or generally work alone in a crowd. As a result, the overall premise of Unscripted is that blurring the boundary between work and play in the office doesn’t diminish the amount of work being done.

Koleksiyon [11-132]

Manta



➔ Manta is a modular partition wall developed for workspaces and common areas. The design is composed of fin-shaped rectangular plates that rotate easily on an axis, creating different effects in semi-open or fully-closed configurations. The screen can adapt to the needs of any situation at hand, whether it be a need for privacy or collaboration.

Plan



➔ Plan is a unique and inventive seating system that can be planned for workplaces, common areas and hospitality spaces. Designed to cope with the ever-changing dynamics of working culture with its rich and varied combinations, Plan invites the end-user as an active participant to layout and design the seating collection based on their needs. As a result, Plan offers new interpretations and functionality at each unique site.

National Office Furniture [325 N. Wells St.]

Collette Lounge



➔ National's Collette lounge furniture collection offers residential inspired comfort with commercial durability. Based on market cues and new research, we know that workplaces are inviting residential inspired atmospheres into the workplace. National's newest lounge series, Collette delivers comfort, design, and flexibility to today's evolving spaces. Collette's lush pillows and relaxed sit, combined with its classic, linear frame transport users between casual comfort and commercial style.

Mabel Ottoman

➔ The Mabel seating collection is a contemporary family of seating that offers superior design with a sweeping shell seat and new ottoman addition. Sit down and relax in Mabel's curved seat that encases guests in comfort and promotes relaxation. Expand your comfort even further by utilizing Mabel's new ottoman to kick up your feet.

The low, mid, and high back seating options, combined with the 4-prong, auto return ottoman, give Mabel the design flexibility to accommodate private offices, open plan spaces, and meeting areas, all while making a welcoming impression.



*Nemschoff [330]***Palisade**

➤ Charles Eames said, “the role of the architect, or the designer, is that of a very good, thoughtful host, all of whose energy goes into trying to anticipate the needs of his guests”

Palisade embodies that Eamesian principle through a collection of products for healthcare public and waiting spaces. In hosting guests, it communicates care and comfort. Through varying arrangements, it gives people of all ages and abilities choices for accommodation. With a unifying visual language, it gives interiors a cohesive look.

*Nienkämper [365]***Gazebo**

➤ Designed by Nienkämper, Gazebo creates a finely crafted indoor oasis with an emphasis on comfort and productivity, suitable for a variety of applications within office environments. The innovative structure provides a relaxed and technology-enabled setting for casual or more formal meetings, and improves indoor air quality with the incorporation of biophilic elements.

Constructed of extruded aluminum, Gazebo has been engineered for quick installation with extrusions that allow the structure to be built in less than four hours by two people. The interior acoustic wall panels and wood ceiling help absorb sound and reduce noise levels, while the well-proportioned structure provides privacy, perfect for today's open office environments.



Vox



➤ A new electric height-adjustability feature now makes Vox FlipTop tables even more applicable to a wider variety of uses. One can easily transition from sitting to standing in seconds for a flexible environment. The electric mechanism allows quick and quiet adjustment from 28" to 40" high, while the two base columns stay perfectly in sync as they move up and down.

Vox FlipTop height-adjustable tables enable you to choose the most comfortable way to work. You can vary your position from sitting to standing, allowing for a variety of postures throughout the day.



Vox solves the problem of storable conference/meeting room tables by providing a complete solution for multi-purpose rooms. Mobile furniture, while highly desirable, often doesn't complement furniture in corporate spaces. Moreover, rising real estate costs have increased the need to optimize boardroom spaces for a variety of other functions.

The new height adjustable Vox FlipTop Tables combines unique design with versatility to transform corporate spaces like boardrooms into flexible meeting places. It is designed

to integrate with an existing boardroom table collection for an appearance of permanence, even though the tables can be moved easily on short notice.

Nook [7-5078]

Hyper-flexible Work Solution

➤ Today's workspaces have become so open that disruption is a natural by-product. Modern organisations' drive for efficiency, collaboration and the holy-grail of innovation have removed the walls and dividers which used to create a sense of privacy and isolation. While the end is valuable and worthwhile, the means has had a negative side-effect.



Separation factors are critical to the personal focus required for deep work and to hold meaningful conversation. Their removal, while positive in many ways, has also resulted in difficulties for workspace occupants.

Nook was created to redress this imbalance; to deploy effortlessly in to any space, with no infrastructure required, and to offer an oasis of calm.

Nook is a mobile quiet-space for people to meet & work, away from the noise of offices, events and public spaces - for phone calls, dedicated tasks, intimate conversations and spontaneous or planned meetings.

Nook pods are designed to create semi-privacy and intimacy without claustrophobia or isolation. The carefully dimensioned form and attention to acoustic materials make Nook feel cozy and calm, while the openness of Nook keep it welcoming. Occupying a Nook brings a sense of peace and communicates to others 'I am here to get things done' such that an unspoken soft barrier is created, without having to close one-self off from the world.

The structure is a sit-in booth, shaped like a classic 'home' icon. It includes spacious bench seats with storage space underneath and a generous table area, mains power for international plugs and USB Sockets, color controllable lighting above and a task lamp at table level, with a convenient shelf for devices and arms, and robust wheels for high mobility & flexibility.

Nook helps to make an environment agile, to cater for a variety of activities in one area. It makes a space more efficient and flexible while helping people to focus or collaborate, to isolate or gather spontaneously. Nook pods are positioned between open office desks and dedicated meeting spaces, offering an ad-hoc space in which to focus on a task or to quickly meet and connect.

A single Nook is ideal for 1-2 people to work, meet, relax or eat in. It can accommodate 3-4 people for shorter periods. Bench seats can be removed or added and placed alongside, to create additional seating around the Nook. Multiple Nooks can be placed together to build larger temporary meeting spaces. Using nooks together offers real opportunities to maximize space efficiency and to cause innovation to occur. Collaboration becomes inevitable while people are connected in an inviting, exciting way.

At Neocon50 we will demonstrate how the Nook's modularity allows it to be deployed for a number of applications with only small changes to the make-up of the product.

Okamura [11-124]

Lives Work Chair



➤ Japanese office furniture manufacturer Okamura introduces Lives Work Chair, a fully upholstered multi-purpose chair designed to work in today's highly collaborative, residential- influenced workplace.

The chair is part of Okamura's "Lives" series, relaxing yet functional office furniture designed to fit collaborative or even co-working office spaces. Casual, relaxed and influenced by residential design, all with a core of commercial grade products.

Designed and engineered around Okamura's focus on ergonomics, Lives Work Chair reclines up to 15 degrees and includes Ankle-Tilt Reclining. The curve of the chair continued from the back to the armrests provides comfortable support and the right posture for desk work. The seat uses, multi-density cushion, making it comfortable to sit on for long periods of time. A sleek single control with two levers makes it simple to manage height adjustment, reclining tensions and, upright lock.

The chair is available in Interlock, leather and twill. Curated especially for the Lives Collection, the twill fabric is woven with a pattern of diagonal and parallel ribs, giving it a deeper, richer color and texture.

The contoured backrest is offered in mid and high backs. The tailored back and seat are fully upholstered; the body, available in black or white, has a 5-star base available in black, white or polished aluminum. A four-leg wood base is also offered in two colors.

OM [7-5072]

Ginny



➤ OM, a company known for smart seating solutions, introduces Ginny, a universally appealing visitor's chair for virtually any environment. Functional and versatile, Ginny smoothly transitions from an office to a waiting room with aplomb.

Ginny effortlessly gets the job done by coordinating well with the full range of OM's executive and task seating collections. The frame is constructed of a flat oval tubing with symmetrical built-in arms that allow for seamless transitions throughout the chair's external structure. Ginny is available in two finishes: black powdercoat or chrome. Optional glides and casters facilitate a shift in functions or when re-arranging space. The wall saver leg design protects walls from scuffs and scrapes, and a vertical clean-out makes for easy cleaning. Ginny can be specified for healthcare facilities, educational spaces, collaborative workplaces, and more. In other words, Ginny truly plays well anywhere and with any chair.

Having your back with great seating is what OM does, and the finished look that Ginny's upholstered back shell offers is yet another way to furnish work environments with a sophisticated design that is sure to elicit compliments, even as the chair complements primary task seating. Further adding to the designer-friendliness of Ginny, OM offers a wide array of colors and grades through its four primary fabric partners: Stinson, Momentum, Mayer, and DesignTex.

OM designs and manufactures affordable but thoughtful, well designed seating. Ginny is a direct response to a persistent client demand for an uncomplicated chair with multiple purposes.

Werktsy



➡ Nimble, playful, and fluid in form and function, Werktsy re-energizes seating for the modern workplace. Born from a partnership between smart seating resource OM, a national leader in the mid-market seating category, and Gecco Vision, helmed by designer Henner Jahns, Werktsy is as friendly and resourceful as its name implies. The Werktsy Collection is a visitor's chair for listening and learning, a hoteling chair for sharing and studying, and a rocking chair for creating and collaborating.

As the forms of the modern workplace evolve, and demographic and cultural shifts in the workforce multiply, our needs for sitting, standing, collaborating, and encouraging productivity adapt in tandem. As a portmanteau of “work” and “easy,” Werktsy makes your work experience easier. Featuring a fluid form language and graceful lines, Werktsy delivers ease of motion and undeniable comfort. Guest seating includes a natural waterfall backrest “ledge” that acts as an easy-access arm rest. The light task seating or hoteling chair includes a mechanism that enables a simple forward and backwards tilt for extra comfort. The group-work oriented rocking chair offers a confident, smooth ride through its forward pause-perch position into a full arc, rocking back motion to stimulate creative ideas and collaboration. The rocker also offers a unique height adjustable solution and an auto-return swivel for a complete movement experience.

Transcending traditional expectations of seating and its relationship to people and how they work, Werktsy re-imagines the modern work environment and re-writes the rules. Whether you intend to collaborate, create, or contemplate, Werktsy enables your return to the elementals of work.

Peter Pepper Products [1094]

Boomerang Bench



➤ Designed by Vicente Soto, the Boomerang bench by Peter Pepper is ideally suited for interior and exterior applications in museum, hospitality, corporate, education, health care and residential environments. The open, sweeping arc design embraces a lighter scale feeling in a larger format sculptural seating element. It's roto-molded in polyurethane with UV protection in grey, red and white finishes.

Peter Pepper also is introducing Vilagrassa products to the North American marketplace. The Vilagrassa Collection is known for added value in design, innovation and technology that connects architecture with people to enliven the workplace. International focus is the result of a product strategy based on a collaboration of renowned designers like Vicente Soto, Jordi Blasi, Josep Llusca, Mario Ruiz and more. Together they are providing new opportunities with inspiring product lines and real solutions, while never compromising the integrity of the design.

Safco - Mayline [1147]

Aberdeen and Medina



➤ Aberdeen and Medina Desks are now available with an electric height-adjustable option, allowing you to reach new heights while you work.

Aberdeen and Medina Desks are a classic addition to any workspace, and can now take your workstation to new heights. Being able to move between sitting and standing throughout the day can help encourage increased activity. By standing, fidgeting and moving more while you work, you can engage major muscle groups and help combat the negative effects of inactivity in many workplace settings.

The new, height-adjustable Aberdeen desk features a sleek design with distinctive, fluted edges that match the rest of the Aberdeen line. Desking, conference and reception furniture are all part of the Aberdeen Series, making it easy to create a cohesive and professional work environment.

Medina also comes from a full set of products. The Medina Series, complete with Desking, Conference and Reception options, features beveled edges and Silver detailing for a contemporary furniture line.

Creating height-adjustable options on classic Casegoods lines is just one way in which Safco – Mayline is constantly striving to improve on classic products to make them even more relevant to today's market. Check out the full range of innovation on our website.

Safco - Mayline [1147]

MYAHTM Collection

➤ MYAH is an exclusive collection of furniture created to “Make Yourself At Home” using highly comfortable, versatile products with a home-style appeal to encourage collaborative environments for people to gather and work. This customizable and configurable collection is jumping forward into workplace comfort for work environments that are always changing.



The new collection features furniture pieces including stools and tables in both sitting and bistro-heights, a lounge chair, a shell chair and two ottoman options. These products are designed with a simple and contemporary aesthetic, featuring wood and steel details, along with fully customizable fabric options for the seating and ottomans.

The collection can be configured in a multitude of ways to support the modern worker that craves comfort, flexibility and the feeling of simply being home.

New Colors to Zenergyä, Runtzä , and Zenergy Swivelä Ball Chairs

➤ Safco—Mayline is launching new colors to extend their pre-existing line of active seating. Zenergyä, Runtzä , and Zenergy Swivelä Ball Chairs are now available in two-tone fabrics. We will be showcasing our new additions to the Active Collection at NeoCon.

Multi-colored options are available in two-tone vinyl or two-tone fabric to suit a variety of décor. All pieces include a covered exercise ball, anti-skid base, and a pump. These chairs support a movement-filled day and can help improve posture.

Runtz is the perfect size for children to use, and acts as a great alternative desk chair within classrooms. Zenergy and Zenergy Swivel, provide adults with an easy way to mix up their day within the workplace; perfect for a collaborative space or private office.

These seating solutions are part of the Active Collection; Active Collection products are designed to promote active movement throughout the day and engage major muscle groups to help combat the negative effects of inactivity. Ball Chairs designed by Thomas Walser.



*Scandinavian [1191]***Bob and Honken**

➤ Partnering with Blå Station, Scandinavian Spaces includes two award-winning products in its curated line of contract furnishings — Bob and Honken.

*Bob**Hoken*

Bob can challenge or adhere to all types of spaces. Created to add character, it is constructed using individual modules personally customized to fit its interior surroundings. The sofa can curve in, out or both at once.

It was designed by Thomas Bernstrand and Stefan Borselius.

A roomy armchair, intimate two-seater or a spacious three-seater sofa, Honken offers multiple solutions to add comfort to the contract interior. Constructed with durable steel and expanded metal, Honken sits on stylized, turned out legs of solid oak — a fusion of traditional wood with modern, futuristic metals. Designed by Bernstrand, the Honken is made to withstand the rigorous demands of high-traffic environments and makes for an excellent environmental choice by upholding sustainable development.

*SitOnIt [1150]***Movi**

➤ SitOnIt Seating has added Movi to its line of nesting chairs. Billed as “the last nester you’ll ever need,” Movi is an all-around, comfortable and flexible chair.

With 14 degrees of flex at the hip, Movi helps distribute pressure evenly across the back and seat for better, long-term support. In addition, built-in ergonomics allow for easy movement, making Movi a comfortable seat for users of all sizes. It’s lightweight frame makes it a space saver and allows for easy and spontaneous set up, quick break down and fuss-free storage anywhere.



“The workspace is constantly changing, and we really saw a need for a chair that could play multiple roles,” says George Nicolaescu, product marketing manager at SitOnIt Seating. “We think Movi is a chair that will complement a larger variety of spaces since it offers the comfort of a task chair in a compact form that can be easily stored.”

The chair is available in 12 mesh colors, three back and frame colors and thousands of textile options.

*Spec [11-112]***Hardi**

➤ Designed as a single-piece of rotationally molded polyethylene, Hardi armless Dining and Lounge launched last year to rave reviews for its worry-free support in Behavioral Health. Hardi now welcomes four new solutions, to ensure design continuity and breadth of line.

The Rocker has an inviting profile and allows patients to self-soothe when needed. Lounge and Dining chairs with arms add versatility in cafeteria or TV rooms. Hardi Stool is a fitting addition to situations where needs change frequently.



Ensuring design continuity in a space, the new Hardi additions put patients and caregivers at ease and give facilities an opportunity to holistically specify behavioral health furniture requirements with confidence. Seating may be combined in style or grouped by 6 inviting standard colors to create aesthetically dynamic area in hard use applications.

Spec's Marketing Manager Dubravka Milinkovic adds that Hardi is finding its way into other applications: "Although it was designed with Behavioral Health in mind, the series has been used in schools, police stations and other public service areas where ease of maintenance and durability are just as important."

Factory Table

➤ Factory Table brings the option of mobility to collaborative areas. To support dynamic group task, a 2" steel base and a 2" build up edge table compliment industrial locking casters that make movement effortless. For those with dedicated teamwork areas, Factory Table may be specified on glides as well.



"Spec assists customers in finding new ways of working solo or in teams. Over the last few years, we have built many versions of Factory Table specific to customers' needs, and it was time to add it to our standard offering. Along with this exciting new product launch, we are introducing a solid wood top as an option for the Factory Table for a striking sophisticated look," says Dubravka Milinkovic, Marketing Manager at Spec.

Factory Table is Available in 30" and 42" heights; 36" and 42 depths and 72", 84" and 96" lengths. Power and communication modules can be specified on the table. Designers will appreciate an endless selection of laminates, a choice of 38

2mm bio edge colors and 76 Spectone base colors. Factory Table lets specifiers create spectacular collaborative areas.

*Steelcase [300]***SLIQ**

➤ SILQ, a chair that transforms seating design. Through an innovation in materials science and a patent-pending process, Steelcase designers and engineers created a new high-performance polymer material that emulates the qualities of carbon fiber at a mass market price. This material, combined with the sensuous curves of the design, allows SILQ to respond to natural movements of the human body without the mechanisms typically required in high-performance seating designed for the workplace. The result is a chair that behaves more like an organism than a machine – a new archetype in office seating.



“The idea behind SILQ comes from our deep belief about design. The visual language, performance language and material composition should come together to create something that’s truly unique,” said James Ludwig, vice president, global design and engineering. “We took inspiration from aerospace, the motion of a high-performance prosthetic leg and sculpture, among other things, to understand how the combination of advanced materials and shape could create a simple system that is incredibly thin, extremely strong and highly responsive.”

Ludwig and his team had a vision for an entirely new way to design a chair. They imagined replacing the hundreds of parts needed for a fully adjustable task chair with a simple system, where the material becomes the mechanism.

The team first created a premium version of SILQ in carbon fiber. But they knew they needed to innovate further to reach every audience. They continued prototyping and invented a new material and manufacturing process resulting in a high-performance polymer that behaves like carbon fiber.

“The way SILQ is shaped, what it is made of and the way it performs are inseparable,” continued Ludwig. “We pushed the boundaries of materials science and the material became the mechanism.”

SILQ is designed for the way people work today. People at work are moving from one space to another and are less likely to sit at an assigned desk all day. They have less time to adjust mechanisms and need a chair that is intuitive to use. The way SILQ responds to a person’s posture and stature is unique to each user because of the way the materiality, design and motion of the human body come together. Height is the only adjustment necessary for a tailored and unique experience.

SILQ offers an expansive variety of material combinations, including digital printing options, to allow interior designers to create virtually limitless bespoke versions for their clients.

The chair will be available in the new high-performance polymer as well as carbon fiber.

Clipper

➤ Clipper is a freestanding screen that provides on-demand privacy in open office environments. It was designed to solve for three key user needs of the modern worker while maintaining aesthetic harmony in the office. The first type of user is the on-demand worker, those who want choice and control over the amount of privacy they need, followed by private users, people who need a place to focus with fewer distractions and teams and individuals, who need spaces for solo and group creative work. Clipper comes in either a 72” height version or a 56” version, covered in fabric with optional contrasting colors, a magnetic closing system and handles for easy portability and storage.



Steelcase [300]

Answer Fence & Answer Beam



➤ The Answer family of products are designed to support both individuals and groups, in resident and nomadic settings, with the flexibility to adapt and evolve as the needs of your organization, your people and your culture shift. Answer fence and Answer beam are the two newest additions to this platform, joining the panel to create a range of hardworking spine based solutions that solve for a range of customer needs.

Answer fence offers freestanding, light-scale space division, while providing power and data distribution and access. The fence was designed as a complementary element to plan with freestanding desks and storage to create a simple and complete solution. With its open base and 'barely there' profile, Answer fence provides access to power and data while preserving an open, social feel. The fence supports screens for varying degrees of privacy and pairs well with height-adjustable and freestanding fixed-height desks. With its simple smarts, Answer fence helps organizations optimize real estate by enabling space design that is efficient and hardworking, yet open and airy – even in a compressed footprint.

Answer beam helps bring down barriers, making traditional work settings more open, casual and social – in tune with modern workplace priorities. The light-scale spine delivers power and data, with access at multiple elevations. The beam supports privacy screens, worksurfaces and a range of stanchion mounted and freestanding storage, and works well with height-adjustable desks. Its lower elevation allows for access to daylight, encourages collaboration and offers an updated feel.

Ology Bench with Active Touch & Rise

➤ Ology Bench is the newest addition to the Ology family of products. Ology height-adjustable solutions support the physiology and biology of workers and encourage a more health-conscious environment.



Ology Bench balances an organization's need for space optimization and support for employee wellbeing.

It supports posture change throughout the day, offers robust power and data management, and maximizes vertical real estate with integrated rail that supports space division, lighting, power and work tools.

The new Active Touch Controller with Rise mobile app elevates user wellbeing with a sleek and intuitive design offering easy adjustments and subtle Active Motion posture reminders to change postures. The accompanying Rise mobile app is a height adjustable desk assistant to analyze and encourage movement for healthier, happier, more productive experiences in the workplace.

Embold

➤ Embold is a collection of seating and tables that combine beauty with accessibility, while offering a variety of sizes and material options. Inviting and expressive, Embold brings residential styling to healthcare with a collection that is versatile for a wide range of people, needs and spaces.



Studio TK [1041]

Cesto Collection



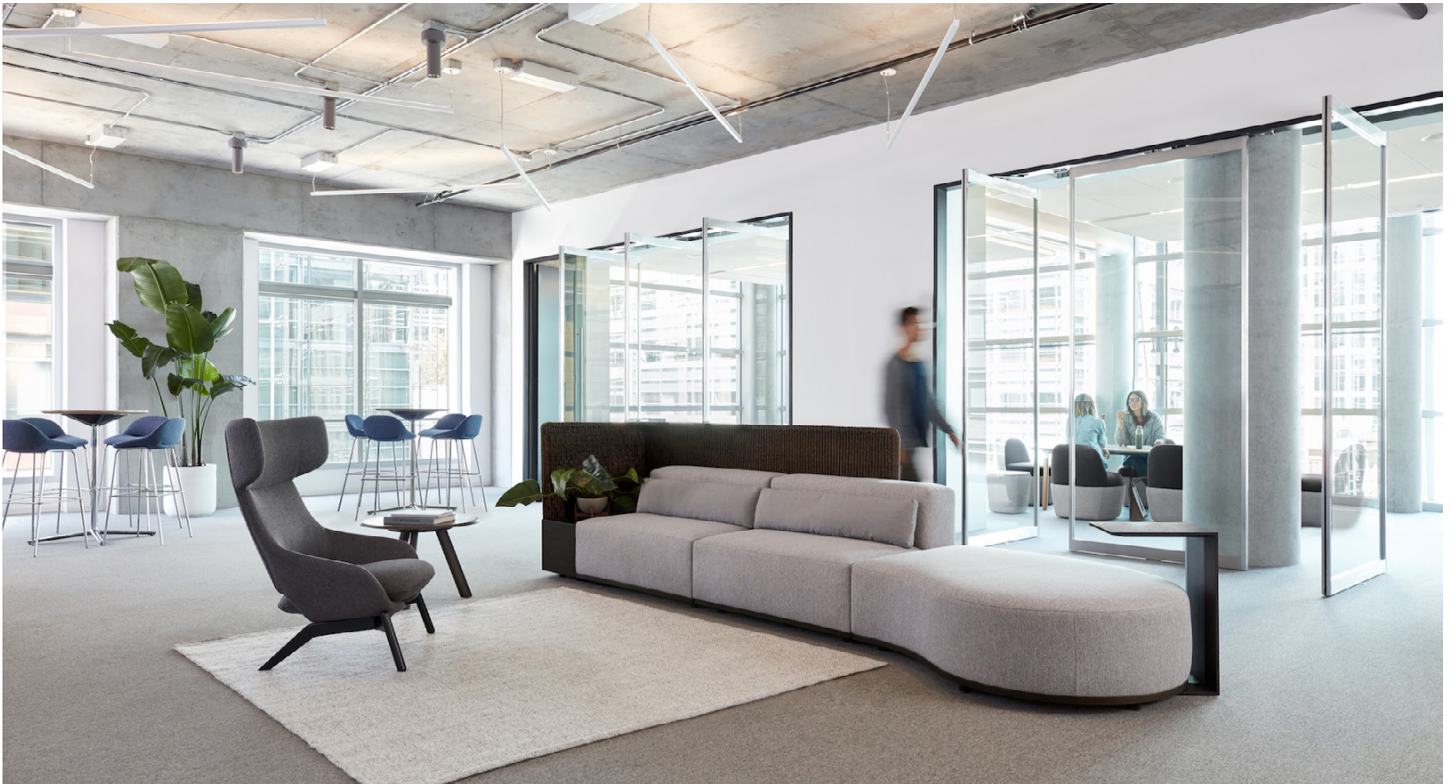
➔ Studio TK announced the debut of Cesto, designed by Khodi Feiz, at its new tenth-floor showroom during NeoCon. Cesto, Spanish for “basket,” is a collection of interactive seating and table elements designed to address the dynamic collaborative and social behaviors typical of today’s work environment.

“For me, Cesto is all about freedom and flexibility,” said Khodi Feiz. “The flexibility to gather and collaborate spontaneously. Freely reconfiguring and morphing into settings depending on your needs throughout the day. Creating a dynamic and effective layout reflective of today’s social work. This freedom also extends into the different functional typologies, into the coloring and material choices and their compositions.”

The Cesto family is composed of an upholstered base element and a variety of different functional tops. The lower “basket” can be finished in a knit mesh or fabric, offering a contrast in textures and colors. Numerous colorway possibilities enable extensive personalization. Tabletop surfaces are also available in a range of different materials facilitating easy customization. This simple collection of tables offers a comprehensive family of furnishings for the new social office landscape. Light weight and mobile, they are easily moved about.

Cesto stools encourage quick touchdown collaboration at traditional 29-inch-high tables. Bench seating – with or without backs – and poufs are designed for more social spaces, and enable collaborative work at 26-inch-high tables. Like the Cesto tables, poufs are also lightweight and easily moved.

Borough



➤ Studio TK announced the launch of the Borough collection, designed by Christophe Pillet, during NeoCon at its new showroom during NeoCon.

“Thoughtful public spaces enhance our daily experience as we journey between our destinations. They are brand touchpoints expressing an organization’s personality and grace toward employees and visitors alike;” said Christophe Pillet. “I designed Borough to create excitement in a space. To be welcoming and comfortable for people meeting and talking for extended periods of time. And to create an experience – a feeling, a touch, an emotion.”

Borough exudes elegance with refined textures and finishes. A visual floating platform imparts a sense of hovering above the floor. With soft, residential elements, Borough lends itself well to commercial planning abilities. Elemental pillows to bring the coziness of home into work life. Set on a 44-inch-width module with a multitude of materials, Borough extends the possibility of choice with ease of planning. Two back styles – angled for a more residential public space, or straight for perimeter or banquette planning – brings an elegance paired with functionality to enhance any environment.

Borough tables enrich the seating collection, serving as a place to set your bag or a cup of coffee, or charge your device. The warmth of the wood table series adds an element of the comfort of home. Borough screens also complement the seating collection as elements that bring the emotional qualities of outdoor furniture to the office landscape. Natural rattan screens add a level of elegance to the materiality of the seating.

Borough is a collection of hospitality oriented elements set to enhance our daily experience as we journey between our destinations.

*Symboite [7-1063]***Color to Labs**

➡ In the past clinical, R&D and manufacturing lab furnishings could be in any color, as long as it was white or beige, and it consisted of fixed casegoods. Designers and facility managers are putting more thought into the spaces where people work with consideration for color and flexibility, and this includes the lab setting.

At NeoCon Symbiote will show that labs don't have to be beige or boring. They will feature vibrant colors on mobile, height adjustable lab furniture.

*Teknion [1048]***Storage & Accessories Collection**

➡ Teknion announced that it is featuring the new tn Storage & Accessories Collection, designed by Toan Nguyen with Teknion, in its showroom during NeoCon.

“The need for storage within the workstation has changed over the past decade. The type of storage is shifting from paper filing to personal items and casual use. The traditional pedestal or lateral filing cabinet has changed to become a place for personal items and open organization,” said Toan Nguyen. “tn is a series of universal desktop accessories and freestanding storage items that addresses these new needs for storage and organization in the modern workstation. tn provides a new and unique way to solve a common, everyday problem.”

With its universal aesthetic, tn visually – and functionally – integrates with other pieces within the line. Its unique construction enables personalization through the choice of primary and secondary paint finishes on the collection's interior and exterior faces. tn also offers a choice of material inlays to cushion the contents.

tn Accessories

Modular sizing of the multi-component line of work accessories encourages mixing and matching to formulate various combinations. tn accessories are



designed to be used on their own or in conjunction with the storage collection, enabling users to customize their storage. Accessories include a small tray, long dish, tall dish, pencil tray and pen cup.



A Rail Shelf integrates with standard accessory rails, and allows the smaller accessory pieces to sit on the shelf to offer different tiers of organization. It also acts as a modifier on the Desktop Optimizer, Mini Bag Drop or Bag Drop from the storage collection, offering an alternate tier to organize the smaller accessories.

tn Storage Collection

The storage collection comprises a Desktop Optimizer, Mini Bag Drop and Bag Drop. They provide a high degree of

customization, balancing open and enclosed volumes. The Desktop Optimizer offers on-worksurface storage and casual space division. It features a top surface with multiple material inlay options, and a hinged-door-enclosed volume with optional USB power. Either an integrated paper shelf or a pull-out bin, alongside additional tn accessories, can be specified to further customize the unit. The Mini Bag Drop and Bag Drop offer casual mobile storage of personal items and work bags below the worksurface. They feature an upper shelf for small items, where optional tn accessory combinations can be paired to further customize the unit. Inlay options include felt, laminate and metal.

Enhancements to upStage

➤ Teknion announced that it is showcasing multiple enhancements to its popular upStage workplace furniture system during NeoCon latest upStage developments include: new, lightweight, open storage formats; integrated height-adjustability; Side Filers; new frameless upholstered screen formats; softer curvilinear worksurfaces; and new shared open worksurface supports.

upStage enhancements feature numerous aesthetic improvements. New worksurface supports allow a reduction in the number of legs required, resulting in cleaner, polished look. New upholstered Infinity Screens with their slim, frameless design are available in a variety of heights and modesty levels. All additions combined provide a lighter, more contemporary expression of the already popular upStage offering.



Thonet and Falcon [11-111]

New Mid-Century Modern Collections and Booth Seating Influenced by the Maker Movement

➤ Thonet and Falcon will introduce 11 products at Neocon, including furniture inspired by iconic designs from the early and mid-20th century and booth seating influenced by the Maker Movement. Thonet's new Modern Heritage Collection and expanded Legacy Collection and Falcon's Maker Booth will be featured in its showroom. The Modern Heritage collection was designed by Q Design.

"Thonet's Modern Heritage Collection draws on the popular residential aesthetic and is ideal for today's open plan environments, which requires furniture designed to support the creation of Me, We, Free spaces," said Rick Joutras, design director, Q Design. "Products in the Modern Heritage Collection can easily divide any space for a variety of uses, including individual work (Me), collaboration (We), and general purpose (Free)."

New Products from Thonet

Thonet's Modern Heritage Collection honors Thonet's early 20th century innovations in tubular steel furniture with an entirely new array of seating, tables, storage units, and shelving, all inspired by Thonet's original design library from the 1920's and 30's. Thonet's Modern Heritage Collection builds on the distinctive influence of Marcel Breuer, Mart Stam, and Ludwig Mies van der Rohe to create fresh, original furniture that retains the airy aesthetic of these classics, while using innovative forms, materials and functionalities to address contemporary design needs.

Ideal for meeting rooms and open plan environments, the Modern Heritage Collection includes a lounge chair, stool, coffee, dining, and conference room tables, and a unique stand up community table with integrated storage. The collection also offers storage cabinets, an expandable bookshelf system, and a media cabinet.

New designs for lounge seating, a credenza and storage products, and side chairs and barstools have been added to Thonet's Legacy Collection. Lounge seating, available in high back, low back, and armless styles, features a playful design based on geometric and exaggerated scale that makes the chair feel like it was designed for each user.

The Legacy Collection's new credenza features a modern, yet retro design. Molded plywood legs are available in two configurations: under the cabinet or outbound from the sides of the cabinet. The side chairs and barstools are constructed with bent plywood on a metal frame, available with upholstered seats and back, and can be specified in any finish. Barstools come in full- and counter-height sizes. The Legacy Collection was designed by Dorsey Cox Design.

New Products from Falcon

Falcon introduces the Chelsea line of booth seating. Chelsea booth seating's wood base traces the perimeter with just enough wood to create a warm upscale look without taking the eye too far from one of the several upholstering details. The Chelsea Maker Edition booth seating features metal instead of wood for a trendy industrial look.

Chelsea booth seating may include standard plain back, button, deep tufting, or x stitch. Because there's no top cap framing the fabric as part of the back design, the fabric will flow over the



tops and sides. The booth seating teams with Falcon table tops and bases to create a clean, contemporary aesthetic.

Falcon's J83 and J87 tables feature a sleek contemporary design. The fully-welded steel bases support stone table tops and are available in chrome, satin chrome, powder coat, brass, satin brass, bronze, and antique copper finishes with several color options. The tables can be specified with legs that nest closely to the floor or form a pyramid for a high-end look and feel. "The new products from Thonet and Falcon enhance our extensive portfolio of furniture for collaborative spaces and common areas by incorporating on-trend designs and applications," said Steve Cohen, corporate vice president, sales and marketing.

*Versteel [1093]***Maker**

➔ Maker A by Versteel is ingeniously simple, deceptively strong, and absolutely urban.

Versteel has taken the Maker Project another step ahead with an aesthetic A frame that works hard and looks fantastic.



Maker A tables consist of welded end assemblies (A's) which are then bolted to cross rails for strength and support. Glides are incorporated into each leg for leveling on uneven surfaces. Specify table heights of 29" (standard), 36" (counter), and 42" (stand-up) with rectangular, square, or round tops (or a custom shape if that's what you like). Tables are standard with Studio Steel and ship KD for easy assembly.

To power, or not to power, that is the question, as it's really just a simple table with some simple options. Decide where and how much power you want, then decide if you want to manage your cords via an oversized wire management trough or with simpler self-adhesive cable hooks. Whatever you decide, an uncool table will never be an option if you specify Maker A.

Maker bases always look great with clear Matte, Satin, or Crystal powder coats, but you can also choose from our extensive offering of standard Versteel powder coats. Create distinctive tables for your spaces by matching Maker A frames with tops of butcher block, laminate, veneer, or solid surface. Use our comprehensive catalog of top finishes to bring added character to your project.

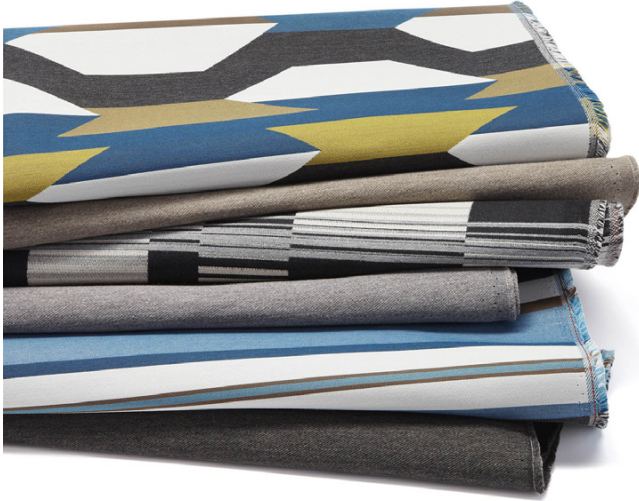
Maker A tables are "Made in the USA" by proud men and women of Southern Indiana, and backed by the Versteel Lifetime Warranty.



*Arc-Com [1194]***Reverb**

☞ If one could interpret music visually what would it look like? An interesting question...

The Arc-Com Design Studio offers up an answer with its new Reverb Collection. Comprised of four patterns - Staccato, Crescendo, Sonata Stripe, and Sync, this collection captures all the alluring excitement and enchanted energy found when one listens to a great piece of music. Sounds gets visually interpreted through brilliant juxtaposition of color and geometric form.



This four-pattern collection includes a stripe and a solid coordinate and was scaled and colored to be mixed and matched-offering up an easy ability to use these multiple designs to create a cohesive space. The color story for this collection is bright and contemporary. Included within the palettes are emerald greens, fiery oranges, brilliant fuchsias, as well as deep and saturated cobalt blues and

teals. Charcoal greys and creamy neutrals are used to highlight the brighter accent colors.

The Reverb Collection is comprised of a combination of Sunbrella solution dyed acrylic and polyester. This entire collection is engineered to be used in contract settings both indoors and outdoors. All of these patterns are bleach cleanable at a 20% bleach: 80% water ratio.

*Brentano [1040A]***Brentano to Preview No. 50 Collection at NeoCon 2018**

☞ From humble beginnings in their 1990's workshop, Design Director Iris Wang and her husband and CEO, E-Kwan Chen have grown Brentano's line from 8 textiles to an impressive range of upholstery, faux-leather and drapery fabrics; with the 50th collection being their largest launch to date. The new No. 50 collection embraces innovation while expanding on Brentano's line of ever evolving products. The fall 2018 No. 50 collection features 25 textiles for residential, hospitality and contract interiors, and introduces Brentano's first ever line of Silicone products.



Inspired by the historical evolution of design and the pursuit of innovation, Brentano's 50th collection embodies the progression and advancement of textile design. The demand for luxurious, high performance textiles with bold, sophisticated colors and modern design concepts became the springboard for this collection. Expanding on the values of today's contemporary elements of design, the new collection infuses several of Brentano's most beloved patterns with a new fresh aesthetic and superior performance enhancing qualities.

Camira [1123A]

Camira Salutes 50 Years of NeoCon With 50 Shades of Blazer

🕒 As the NeoCon World's Trade Fair celebrates its 50th anniversary, global textile maker Camira will mark the milestone with a dazzling, 50-shade salute of its best-selling wool felt fabric, Blazer.

Maintaining a mix of *mélange* and solid shades, the Blazer palette has been refined and rejuvenated with 14 new shades. The trend-forward global palette has been developed after a year of research and insight. The bright and fresh pastels offer an uplifting feel. The corals provide a lively jolt of color, while the greens add a spray of new minty tones, with the purples morphing to misty mauves in flatter shades influenced by grays. There also is a new, warmer neutral tone, Dartmouth.

Blazer is made by Camira, beginning with shearing the raw wool on sheep farms in New Zealand, spinning woolen yarns in *ecru* and *mélange* mixes, weaving on a doobby loom, milling to entangle the wool fibers for the felted finish, dyeing in the selection of colors, before finally pressing and finishing the fabric.

Regarded as an “anchor” fabric which specifiers and designers can use to create a beautiful canvas of textile look and feels, Blazer works together with many other fabrics across compositions and price points. Natural complementary partners include Era, Patina, Blazer Lite and Lucia.

*Carnegie [10-112]*

Inner Strength Collection

🕒 Beam and Cross Stitch are the latest high-performance fabric offerings from Carnegie's new Inner Strength collection.

With rich textures and patterns, Inner Strength was created to fill a void in the market for more luxurious fabrics that are able to withstand the demands of high use hospitality and contract spaces. Its dye and structural engineering make topical finishes unnecessary for these low-maintenance and bleach cleanable fabrics.

Beam resembles crushed velvet and is created with a dense chenille yarn that lends a plush effect unexpected in commercial spaces. The pattern of thin stripes with dashes of metallic silver was inspired by the strength of the structural beams beneath building facades.

Cross Stitch, as the name suggests, is distinguished by a traditional cross-stitch motif. Each version of it is woven with a neutral foundation adorned with a floral pattern. A cross-stitch is then woven throughout the florals, lending a richly layered effect. Each element on its own is traditional and familiar, yet the combination of layers makes this textile modern and unique.



*Concertex [10-103]***Pascal**

➔ Concertex has come out with Pascal, a large-scale plaid pattern that's constructed with 100 percent silicone on the top, layered over a polyurethane base.

This new technology allows for the transfer printed product to be embossed, creating depth and adding texture to the design.

Pascal's offered in six colorways — from cool breezy blues in the colorway Sea Breeze to the vibrant hues in Fireside — that make it a classically hip hybrid pattern.

With its inherently graffiti-free qualities and being bleach cleanable, Pascal is fit for high-traffic environments that crave style and durability.

*Momentum Textiles [11-106]***Palm Springs Weekend Collection by Sina Pearson**

➔ Momentum is thrilled to introduce a new Sina Pearson Sunbrella Contract Collection Palm Springs Weekend.

Inspired by the casual indoor/outdoor living and the best of Palm Springs' mid-century architecture, this high performance Sunbrella Contract collection is bleach cleanable, sunfast and mold and mildew resistant. Perfect for all kinds of spaces and upholstered pieces, the five patterns include the larger scale LINES ON STRIPES and three mid-scale geometric complements: multicolor TERRACE and two-tone ICON and GRADIENT. Pattern TRIANGLES combines simple shapes with random hues that move throughout its long vertical repeat. A total of 39 color ways offer mix and match compatibility throughout the collection.

Sina Pearson, the collection's designer, looked to not only the architecture of Palm Springs but also the quality of light and colors that appear from early dawn to late evening in the desert. Light and dark shapes mixed with shadows create visual patterns in real life and form the inspiration for overlapping and undulating lines in these patterns.

All five fabrics are woven with Sunbrella Contract yarns, providing high performance features including excellent durability and outstanding bleach cleanable properties. Because outdoor fabrics are susceptible to mold and mildew, these fabrics can easily be cleaned with a diluted bleach cleaning solution. In addition, the fabrics can withstand harsh chemical cleaning in any indoor/outdoor environment.

The collection's products are also FACTS certified and have passed rigorous independent certification for sustainable manufacturing practices.



Felderman Keatinge Collection

➊ Momentum Textiles' collaboration with award winning design team Felderman Keatinge is pleased to introduce a vibrant new collection of patterns. The Felderman Keatinge Collection offered by Momentum Textiles is dazzling with its unique patterns, color combination and textural feel.

Stanley Felderman and Nancy Keatinge, design futurists and award winning principal designers of their namesake firm Felderman Keatinge & Associates in Los Angeles have been challenging the boundaries of interior design with their innovative, empathetic and engaged approach for over three decades. Felderman and Keatinge have always been ahead of the curve and were de-



signing human-centered and sustainable spaces with open and flexible layouts long before these concepts became industry norms. Their designs are intuitive and holistic; furniture, art and architecture all speak to each other to create a fully integrated and interactive environment. They have designed a wide range of spaces including corporate offices for entertainment companies and tech firms to restaurants and residential work as well.

Always evolving and always seeking new avenues to channel their boundless creativity, Stanley and Nancy have partnered with the Momentum Design Studio to create an exciting and energetic collection of upholstery textiles for modern corporate spaces. Stanley Felderman, in addition to having a legendary career in architecture and interior design is also an accomplished artist. His original paintings and sketches formed the foundation of the textile designs. Motion and the movement of color and light were sources of inspiration for the collection. Through artwork, colors and textures, Stanley explored how layering and color relationships create movement, vibration and impact sensory experiences. The fabrics are engaging and challenge end users to let go, break rules and express their individuality.

*Pallas Textiles [1181]***Elemental Collection**

➤ Inspired by the artists and works from the De Stijl movement, Pallas Textiles has introduced the Elemental Collection. It embraces an abstract, pared-down aesthetic for interiors. Elements include geometric shapes, straight lines and primary colors. The collection features five patterns:

- Asymmetric hints at De Stijl architectural elements with its gently curving, intersecting lines of varied thickness.
- Construct was inspired by Theo van Doesburg. The avant-garde pattern with varied line weights creates a dimensional perspective.
- Harmony's intricate, fine details give this pattern the look of a near solid with a slightly graphic appeal. The use of novelty yarns adds rich texture.
- Neo plays off Piet Mondrian's neoplasticism, which finds expression in the abstraction of form and color. It has a highly contrasting color palette and varied yarn thickness.
- Utopia is a modern reinterpretation of a classic linen. A concentration on neutrals and select saturated colors makes it work in any environment or provide a transition between spaces.



Atelier Collection



➤ Pallas Textiles proudly introduces the Atelier Collection Developed in partnership with Geraldine Blanchot of Pattern Pod, the Atelier Collection is a visual and tactile foray into the craft of couturiers and an exploration of the textiles behind their creations. Graphically interpreted into performance textiles, the fabrics in the collection defy the norm of traditional contract textiles. They elevate the standard of both design and construction by using a curated selection of novelty yarns and weaving techniques that mimic the delicately glamorous nature of couture materials. Atelier features five patterns:

- **Allure** mimics the detailing of the fashion house Balmain and interprets these details through a blend of heathered wool and silky cottons that capture the nuances from the melding of materials.

- **Glam** draws inspiration from the decadence of Giambattista Valli and modernizes the opulence of vintage textiles. Available in a selection of jewel tones and intricate neutrals, Glam elevates the style of any space.

- One of Ralph and Russo's recent collections explores contraries between geometry and metallics. Playing off this concept, **Glitz's** hand-drawn stitch effects appear as organic lines punctuated with a novelty yarn and bold color work.

- **Balenciaga** is a symbiosis of elegance and cool that maintains the legacy of its original grandeur. Posh explores this same balance between old and new with this foundational textile. Its multifaceted neutrals injected with vivid colors give it a theatrical effect.

Being genuine is as important today as it ever was. From the quality of our materials, to the authenticity of our people, we are true to who we are and the creations that bear our name. Pallas Textiles fuses the art of weaving with today's modern techniques and fibers into sophisticated, stylish and timeless upholsteries, panel fabrics and privacy curtains that continually evolve in color, pattern and texture.

Bretford [7-1125]

Juice Mobile Power



➤ Introduced at CES 2018, Bretford's Juice Mobile Power – the world's first mobile Active Charging solution – is now available to order and ship. A game changer for IT and facility managers, Juice Mobile Power brings safe, DC power from one outlet to the entire room via a flexible, mobile system. With its built-in FLI Charge safety technology, Juice Mobile Power has received Federal Communications Commission (FCC) and ETL certification ahead of its debut.

“Juice Mobile Power delivers power throughout the room, allowing greater flexibility for people to charge their mobile devices,” said Chris Petrick, CEO of Bretford. “This intuitive product will make a major difference, enabling schools, businesses and individuals to keep up with the power demands of the mobile device driven world we live in.”

Juice Mobile Power eliminates the tangled web of non-compliant, overloaded extensions cords by delivering a safe, flexible way to turn a single wall outlet into a power source for the entire classroom or office, at a fraction of the cost of a retrofit. Through its FLI Charge safety technology, Juice Mobile Power smartly detects foreign objects and instantly power down to ensure safety, powering up once the object has been removed from the powered surface. The software for the safety circuit has been certified under ETL, which covers the safe operations of embedded safety controls. Juice Mobile Power has also undergone all required FCC testing.

“The interest in Juice Mobile Power has been overwhelming,” Petrick said. “Receiving FCC and ETL certification further solidifies this product's ability to change the way power is delivered at an infrastructure level.”

Chief [7-2130]

Chief Brings Convenient Power to Desktops

☛ Chief is now offering power solutions for workspaces and furniture. The options will be on display at NeoCon.

The sleek and easy-to-install Desktop Power Centers mount directly on desktop surfaces. Two or three AC outlets and two USB-A ports make charging simple for desks, tabletops and workstations. Smart charging capability recognizes devices and when to shut off during peak loads.

The Desktop Power Centers include both desktop clamp and mounting kits for both horizontal and vertical applications. Two finish options – black and white with gray – pair with any environment. A 6' cord with unique pass-through plug keeps the outlet open for other uses.

Also new to Chief are the radiant Furniture Power Centers, which make it possible to convert nearly any piece of furniture into a sleek and modern charging station. The innovative design brings together the functionality of USB with traditional power for convenient charging in training rooms, conference rooms and more. Quick and easy to install, and include two tamper-resistant



AC outlets and dual USB-A ports. Available in two attractive shades – white and nickel – to complement any style of furniture. As with the Desktop Power Centers, the radiant products also include a 6' cord with pass-through plug.

“With Bring Your Own Device taking over the workplace, and personal devices always needing a charge,” said David Albright, Business Development Manager, “Chief’s offering of affordable power solutions from Legrand are perfect for desks, tabletops and workstations.”

Both the desktop and furniture solutions are powered by Legrand – Chief’s parent company and the global specialist in electrical and digital building infrastructures.



Chief [7-2130]

Kontour KX Monitor Arms

➔ Chief has updated the premium Kontour Series Monitor Arms to meet the challenges of office space densification. The new KX Series will be on display at NeoCon.



“The days of 30-inch deep desktops are behind us,” said David Albright, Business Development Manager. “With 24-inch and shallower being the new normal, dealers were asking for a monitor arm solution that could provide a full range of motion while also allowing users to push the displays out of the way when not in use.”

The new FleXlink design optimizes the depth

of dual-, triple- and quad-monitor installs for shallow depth desktops while still providing full range of motion for screen sharing. Available in white, black, and silver finishes to match modern office décor.

This series includes Chief’s patented Centris Extreme Tilt technology for effortless fingertip monitor positioning from +75° to -10°, allowing for maximum viewing comfort whether sitting or standing. Kontour monitor arms float your displays in the optimal ergonomic position above your work surface to create a more productive and comfortable work environment.

The FleXlink arm kit is also available to retrofit existing K1 Series monitor arm installs.

Other features include:

- Best-in-class weight capacity range of 5 to 25 lbs. makes specification simple
- Sleek, solidly-constructed forged aluminum arms
- Enhanced column interface enables easy upgrades from single- to dual- or triple-monitor installations without impacting the existing installation, future-proofing your investment
 - 20” (508 mm) of total height adjustment range
 - Enhanced 3-step installation and quick-release monitor interface for easy mounting and maintenance, with included tool storage in the updated base
 - Easily clamps to edge of desk, through standard grommet hole, or through bolt hole with included kit
 - Tool-free cable management covers for a clean, professional look
 - With high levels of recycled content & a highly-recyclable design, Chief Kontour monitor arms may contribute to valuable LEED-CI, -NC, and -EB credits.

Innovative [7-5094]

Ella

➤ Ella is the next-generation monitor arm from Innovative, continuing our commitment to making ergonomics beautiful. Offering effortless movement and sure-footed stability for monitors up to an astonishing 43" screen size, Ella's groundbreaking design is only surpassed by its unparalleled performance.

The integrated handle enables one handed adjustment of monitor height and position. Ella extends over 24" and has a vertical range of 11.5". The strength of the arm is user-adjustable with support for monitors up to 30 pounds. Innovative counterbalance technology allows customization of the interaction between the screen and the user by selecting the appropriate lifting force for you and your monitor. The thoughtful 180 degree rotation stop at the base of the arm prevents the arm from swinging into screens or walls.

Ella installs entirely from above the desk surface and requires very few adjustments during setup, greatly reducing installation time.

Integrated cable management routes the cables inside the arm to reduce workspace clutter.

The standard finishes of white, silver or black can be complemented with customizable inserts to create a look that fits any workspace.

Single and dual versions will be available and converting between either configuration requires minimal effort and components.

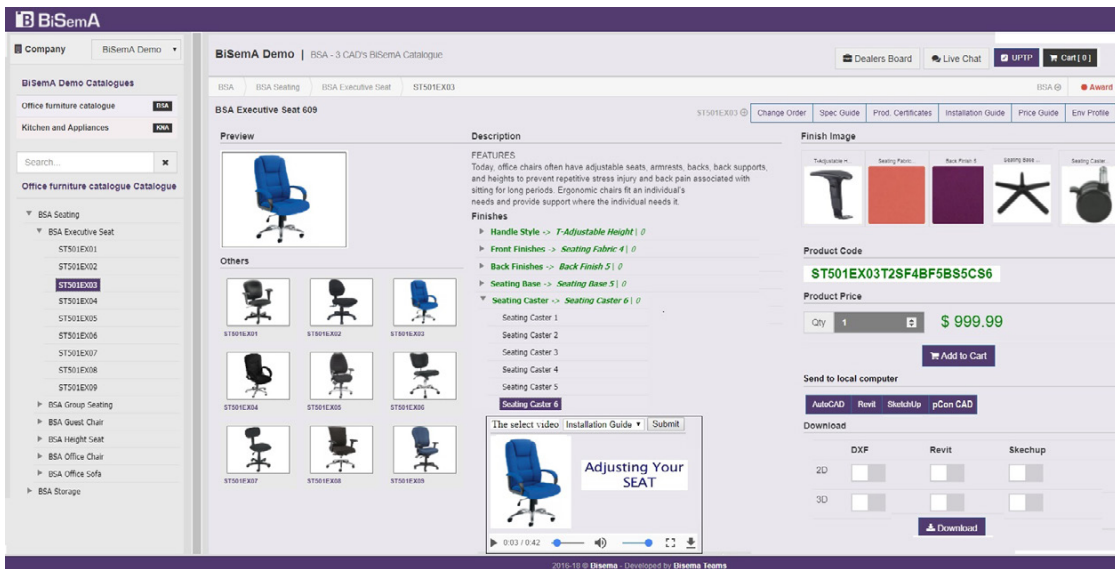


BiSemA Corporation [7-2136]

Cloud-based, Contract Furniture Specification Service

➔ BiSemA Corporation will be presenting a new, cloud-based, contract furniture specification service at NeoCon.

The product features catalogues for office furniture and kitchen manufacturing companies. It will providing end-to-end, online contract furniture specification services for architects, interior designers, residential and commercial specifiers and contract furniture dealers.



“Currently the websites of office furniture manufacturing companies present their product with detailed information, using photos, including an installation guide, different product configuration layouts, price guide, product environmental reports, finish images,

video and much more,” says Semegne Tafesse founder and CEO of BiSemA Corporation. “But the information, and the images, are not on the page where products are specified by their dealers, when they are most needed.”

BiSemA brings together product information and detailed specifications onto one web page, making available the information customers need to make the right decision when selecting product and finish types. The services also allow the transfer of selected product drawing symbols from the cloud shopping cart to a local CAD application, inserting the product symbol for a space layout. This computer programming of transferring the product symbols to a local CAD application — AutoCAD, Revit, SketchUp and pCon CAD — is patent pending.

“Bringing all the catalogue information together for a selected product, dynamically, and specifying it with users’ local CAD applications for space layout is one of the main benefits of using BiSemA’s specification services,” Tafesse says.

Products in the shopping cart or on local CAD application can be sent to tablets and smartphones whether they are Android or iOS. This collaborative service will help registered users and sales teams to communicate easily and update their projects.

BiSemA Corporation will present all of its new cloud specification and collaborative services to manufacturing companies and dealers at NeoCon.

BiSemA Corporation was founded in 2017 by a group of software programmers from around the world. This new cloud-based service is supported by Google Cloud Platform. The service will be available in fall 2018.

Configura [7-5129]

CET Designer 9.0 and New Augmented Reality Extensions

➔ Configura, maker of CET Designer software, announced enhancements and new functionalities with the release of CET Designer 9.0 on May 21, and a new augmented reality (AR) CET Designer Extension unveiling this June at NeoCon.

During NeoCon, Configura will showcase the latest features in CET Designer and will be giving away a free registration to their 11th Annual CET Designer User and Developer Conference this fall in Grand Rapids, MI.

Joining Configura in its booth will be Minneapolis-based Praxik, creator of the new CET Designer Extension – InstantAR Pro – to demo its new technology.

Praxik offers mixed-reality solutions for businesses, including InstantAR Pro, which lets CET Designer users “project” their interior designs in empty or furnished spaces using a smart phone or tablet device.

InstantAR Pro builds on the InstantAR Extension launched earlier this year; one of the pro version’s features is the “comparison effect,” which lets designers and their clients compare the current design side by side with the proposed design on their phone or tablet. Another feature will allow designers to scale down large designs and preview them in the “dollhouse” mode.

Companies like Praxik collaborate with Configura to create CET Designer Extensions. There are two types of Extensions: Product Extensions and Utility Extensions. A Product Extension is an addition to the program with functionality that incorporates all of the rules, parts and pricing of a given manufacturer’s products. A Utility Extension is a functional improvement or add-on that enhances the user experience and design process. InstantAR Pro is a Utility Extension.



Humanscale [351]

ErgoIQ

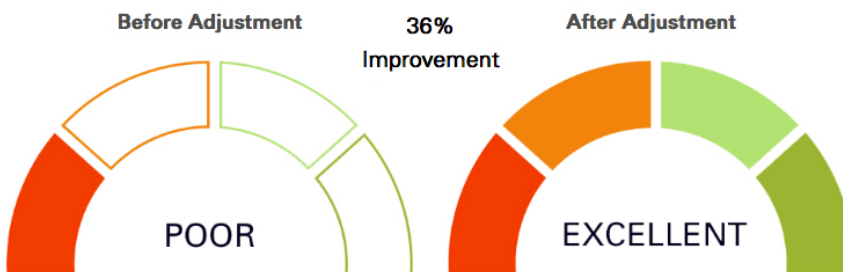
➔ After identifying the need for an accessible, ergonomic evaluation tool for both professionals and practitioners, Humanscale’s leading ergonomists have developed ErgoIQ. The new web based program features a user-friendly interface that guides individuals through a thorough audit of his or her workstation in just 5-15 minutes, depending on one’s current office equipment, and offers adjustment guidance along with a comprehensive “Fit Score.” Two versions of the program will be available this spring: ErgoIQ Self Assessment (ErgoIQ SA) and ErgoIQ Pro for ergonomists, facilities managers and HR professionals. NeoCon attendees will have the first opportunity to try ErgoIQ and discover how it leverages technology to bring health and comfort to the work environment.

ErgoIQ SA enables computer users to configure their workstations for optimal health and comfort with an intuitive Q&A format. The program quickly identifies potential sources of discomfort and generates a tailored improvement strategy for each employee. Recognizing that most people do not fully understand how to apply ergonomics principles to their workstations, ErgoIQ SA provides simple, straightforward visuals that guide users through the adjustment process. ErgoIQ SA does more than pinpoint the worksta-

Close X

Keyboard & Mouse Details

Below you can review your answers and the areas which were improved through this assessment.



YOUR ANSWERS

Question	Before Adjustment	After Adjustment
Keyboard Distance	✓	✓
Keyboard Alignment	✗	✓
Sit/Stand Frequency	✓	✓
Sit/Stand Duration	✗	✗
Anti-Fatigue Matting	✓	✓
High Cylinder Chair	✓	✓
Keyboard Height	✓	✓
Keyboard Slope	✗	✓
Wrist Anchoring	✗	✓
Mouse Position	✓	✓
Standing Keyboard Position	✗	✓

tion areas that need adjustment; it goes a step further by providing a report for the company’s ergonomist, facilities manager or HR professional and alerts them to workstations that require additional attention. The report generated for the company’s ergonomist or facilities manager uses a rules-based algorithm to generate equipment recommendations, further streamlining the assessment process to improve the health and comfort of each and every employee.

ErgoIQ Pro is a practitioner-level tool which enables professionals to conduct comprehensive onsite or virtual assessments. It offers robust and consistent individual and company-wide reporting. Three assessment levels are available based on the level of reporting required.

“Our team of certified ergonomists has first-hand experience managing the inefficiencies of today’s ergonomic assessment programs,” says Jonathan Puleio, Managing Director of Humanscale Consulting and board certified professional ergonomist. “Our clients have been struggling to keep up with assessment requests and equipment-related problems for years. Current approaches are filled with dozens of manual processes that translate into lengthy delays and leave employees working with unacceptable discomfort levels. Our team saw an opportunity to streamline the process by merging the knowledge of experts with technology. Almost every component of the assessment process ranging from employee training and education to reporting to managing approvals has been addressed with ErgoIQ.”

ErgoIQ debuts at a critical time. Not only do employers need to meet the evolving needs of a gradually aging workforce, but research continues to expose the link between workplace design and musculoskeletal health. Armed with insights from ErgoIQ, companies can implement better ergonomic practices that will improve health outcome and reduce overall costs.

Your self-assessment is complete

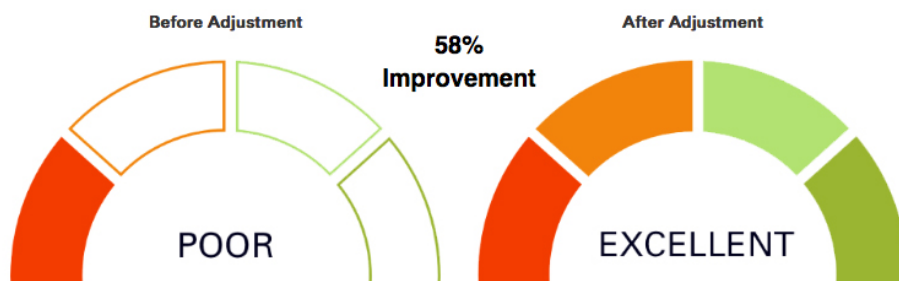
Your fit score is detailed below and is a measure of how well your work tools have been fitted to your body based on current ergonomics guidelines.

Please review each workstation components for before and after comparison details, equipment recommendation and additional resource material.

Your Fit Score

OVERALL SEATING KEYBOARD & MOUSE MONITOR LIGHTING

OVERALL



LOGICDATA [7-10078]

Motion@Work App

➔ As wellness continues to blur the lines between employees' home and work lives, a new Motion@Work App created by LOGICDATA is empowering individuals to maximize their daily movements, bolstering their fitness game.

The new Motion@Work App, to be introduced at NeoCon 2018, is designed exclusively to complement LOGICLink, a revolutionary product fostering integrated office environments and human-centered workspaces by providing intelligent control of height-adjustable work surfaces, helping users optimize the ergonomic benefits intrinsic to them.

“Our new Motion@Work App arms users with meaningful customization of their individual, personal work environment, allowing for consistent, improved daily wellness,” explained LOGICDATA Product Manager Stefan Reiterer.

The new app can:

- Measure standing time
- Measure sitting time
- Provide ergonomic advice based on standing/sit times
- Adjust sit-to-stand workstations
- Daily and weekly graphs to capture usage, measure overall goals and progress
- Monthly and annual analytics for tracking and goal setting

“Motion@Work is that wellness power tool to provide real-time feedback, allowing individuals to track personal health goals during their work day,” said Reiterer. “It’s a natural enhancement to LOGICLink, deepening the overall value of this offering to our customers.”

Reiterer noted that in the future, Motion@Work app users will be able to customize the app for their specific business or organization. “The personalization possibilities are endless.”



Steelcase [300]

Find

➔ The Steelcase Find mobile app helps workers connect with the space, tools and people they need to do their best work. The app works with Steelcase Workplace Advisor and Microsoft Exchange Office 365 to empower employees to quickly find and easily reserve the best space. With Steelcase Find, you see open spaces you can reserve or use right away.



Choose the size, technologies and amenities to support the task at hand.

Steelcase Find integrates with room reservation systems so you can choose a space and invite people to join you, all from the same mobile app. Once the space is reserved, a “shot clock” alerts users when their reservation or meeting is nearing completion and proactively checks future availability in case they need to add a little extra time. Steelcase Find also tracks frequently requested amenities to help space managers understand the needs of their workers.

2020 [7-5122]

Latest Versions of Cap, Giza, Worksheet and Visual

🕒 2020 a provider of applications and enterprise solutions dedicated to interior design, space planning and furniture manufacturing, today announced the release of the 2018 version of 2020 Cap, 2020 Giza, 2020 Worksheet, and 2020 Visual Impression. All these new releases will be available for demonstration at NeoCon 2018.

New features in the 2018 release provide enhancements which streamline daily tasks and communications for office furniture dealers. Built on the AutoCAD platform, 2020 Cap is the perfect professional space planning and specification solution for designing faster with fewer errors thanks to the automation of time-consuming tasks and the most up-to-date catalogs in the industry. As part of this release, 2020 Cap has been updated to support the industry standard AutoCAD 2019 which includes exciting new features such as industry-specific toolsets, DWG Compare, and better workflows across desktop, web, and mobile.

User feedback from the educational market has inspired new features in 2020 Worksheet that will benefit all users. New reports have been added to facilitate response to common bid documents. These reports organize items and quantities by room, print larger images of each item, and allow the user to add images to the report to further describe their proposed solution. New fields containing the full manufacturer name and catalog name were also added to worksheets and reports to make them easier for customers to read and understand.

2020 Visual Impression includes a new user-requested feature that makes it easier to bring focus to the furniture in the scene by hiding the surrounding room architecture. The 2-pt perspective setting is also now available from the dashboard, making it easier for users to switch to 2-pt perspective while taking snapshots.

“In addition to these enhancements, we also continue to ensure we add valuable manufacturer catalog content so designers can provide their clients with realistic designs using the actual products, colors, and materials their clients specify,” states Cindy Maple, Product Manager, Office Suite, 2020, “Catalogs from manufacturers of educational furniture were recently added and will further enhance the benefits of the 2020 Worksheet reports.”

Artopex [Monday 10:30 to 3:00 at 315 N. LaSalle St - River Roast Restaurant]

Artopex Introduces Adjustable Table II Collection

➔ A collection of adjustable tables that includes three models with multiple configurations has been introduced by Artopex. This new generation of adjustable tables is more efficient, allowing for quicker and quieter height adjustment. It's also more flexible with telescopic legs able to accommodate a wider range of users in an ergonomic position.

“The demand for sit-stand furniture for varying working positions is growing,” says Jean Barbeau, Artopex director, research and development. “It is not surprising considering this type of furniture responds to a major underlying workplace trend to emphasize the health and well-being of the individual.”



Several studies show the positive impact of varying positions on concentration and productivity and health issues, such as high cholesterol, type 2 diabetes, weight management and the reduction of muscular and skeletal system problems.

The surfaces of the tables are available in all Artopex laminate colors, and the legs are available in silver and black.



NEX

Reach new heights with NEX!
June 2018 launch.

June 11 - 13 | Visit our NEW
showroom during NeoCon 2018
@ Chicago Merchandise Mart,
10th Floor - **Suite 1000.**



Groupe Lacasse Designer Tuesday | June 12

OPEN HOUSE FOR ALL DESIGN PROFESSIONALS!

Participate in our showroom tour with a Groupe Lacasse guide. Hear the story behind the design of our latest furniture introductions and bring back memorable inspirations!

Experience our **#VoilàGroupeLacasse GIF Animated Social Photo Booth!**
The first 200 design professionals to take a guided showroom tour will receive our designer tote bag.

#VoilàGroupeLacasse

**GROUPE
LACASSE**

1 888 522-2773
www.groupelacasse.com

NEX
Office Furniture Collection